



WHY HAS TRAFFIC INCREASED IN SAN MATEO?

Presentation by Matt Goyne, PE

March 27, 2019

Slide 0 – Welcome

- Thank you to the members of General Plan subcommittee.
- My name is Matt Goyne and I am with Fehr & Peers, a transportation planning firm here in the Bay Area.
- Bohannon Companies asked my firm to investigate the question of “Why has traffic increased in San Mateo?” to supplement the information presented in the General Plan Existing Conditions report.

Slide 1 – Why is my evening Costco trip so difficult?

- Let’s start with an example – an evening shopping trip to Costco. Why does this trip take much longer than it did a few years ago?
- To answer this we need to look at how the region has changed in recent years.

Slide 2 – Job Growth

- Starting at a regional level, the current economic boom has created nearly 1 million jobs since the Great Recession to reach an all-time high of over 4 million jobs.
- This job creation has been fueled by the technology sector on the peninsula between San Francisco and Silicon Valley.

Slide 3 – Jobs/Housing Balance 1

- On a countywide level, San Mateo has created 83,000 jobs between 2010 and 2017.
- The challenge is that these new workers need homes and San Mateo County only built 7,100 homes during this time.

Slide 4 – Jobs/Housing Balance 2

- The 7,100 new homes can accommodate approximately 9,000 of these new workers. Others are coming from places such as the Outer East Bay that have produced a surplus of housing.

Slide 5 – Regional Commute Destinations

- San Mateo County is a regional destination, with 63% of all workers commuting into the County. This is the highest percentage in the Bay Area.

Slide 6 – Means of Commute

- While commuters from San Francisco and Santa Clara have many transportation options, those from Alameda must use the San Mateo Bridge.

Slide 7 – Evening Bridge Traffic 1

- These workers squeeze onto the San Mateo Bridge every day, with traffic congestion increasing from less than one hour to five hours due to the worsening jobs/housing imbalance.

Slide 8 – Evening Bridge Traffic 2

- The bottleneck at the bridge causes congestion to extend in each direction on Highway 101 and 92.

Slide 9 – Commuter Detour Routes


- This has led to more regional commuters using local roadways to avoid the highway traffic.
- For example, our data shows that the amount of people that exit northbound 101 and use Hillsdale Boulevard to reach the San Mateo Bridge has quadrupled in recent years. This is just one example of regional traffic substantially affecting local roadways.

Slide 10 – Housing Impacts on Traffic

- We also reviewed how new housing has impacted key roadways such as Hillsdale and found that they contribute very little to traffic during the evening period.
- In fact, a home at Bay Meadows generates up to half as many vehicles on the surrounding roadways compared to a typical single-family home in San Mateo.

Slide 11 – Thank You.

- So back to the question of “why is my Costco trip so difficult?” We conclude that based on the available data, San Mateo’s job/housing imbalance and the City’s unique location at the foot of the San Mateo Bridge are the primary culprits to blame.
- Thank you for your time and I would be happy to answer any questions.

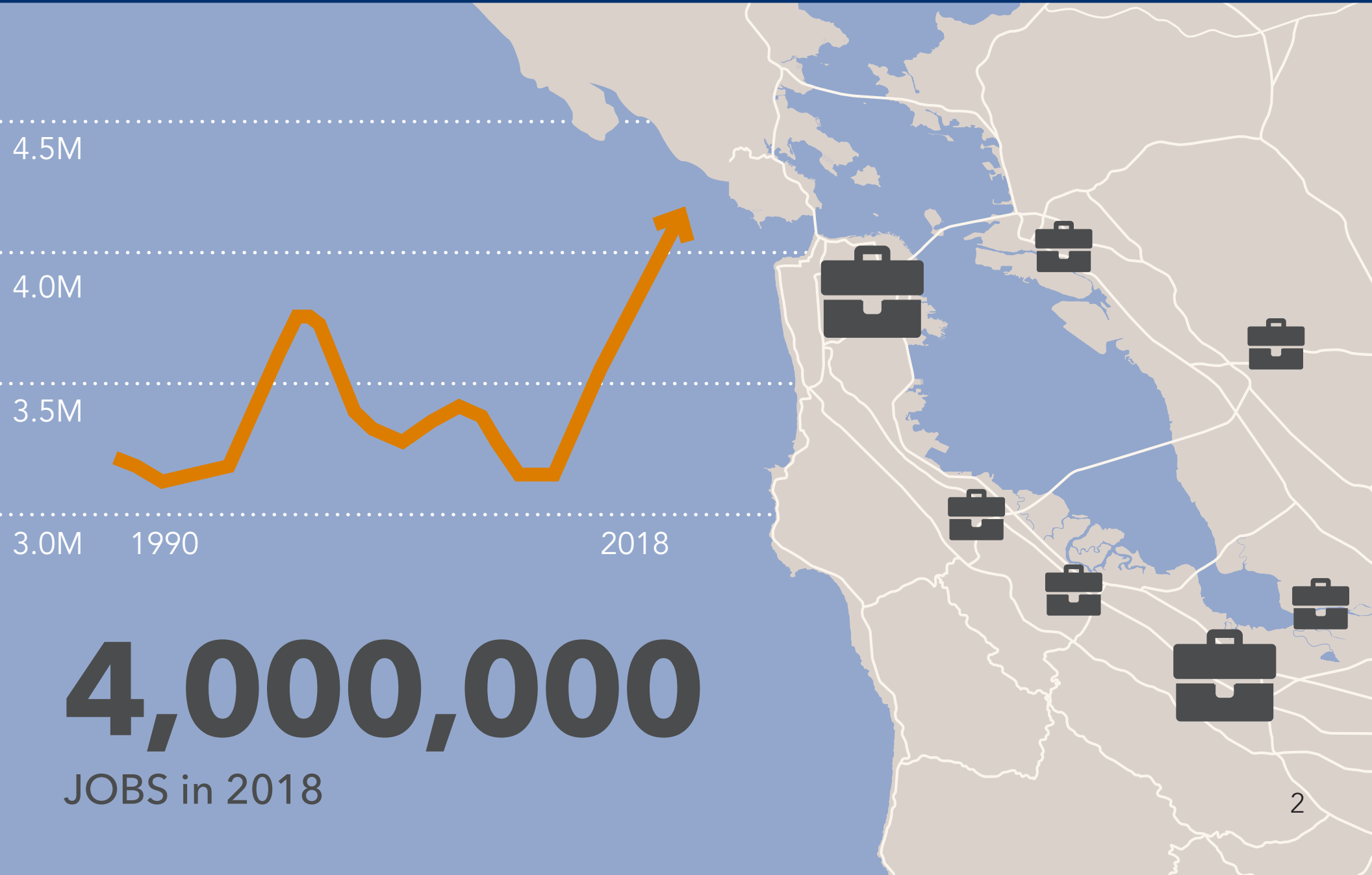


Why Has Traffic Increased in San Mateo?

WHY IS MY EVENING COSTCO TRIP SO DIFFICULT?



JOB GROWTH



JOBS/HOUSING BALANCE

Growth from 2010–2017

83,000

jobs



7,100

units



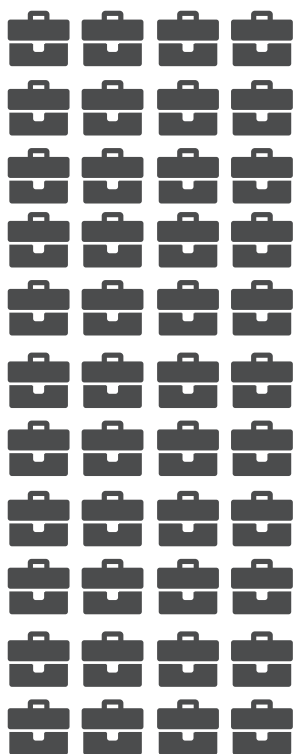
SAN MATEO COUNTY

JOBS/HOUSING BALANCE

Growth from 2010–2017

83,000

jobs



7,100

units



9,000

workers



SAN MATEO
COUNTY

64,000

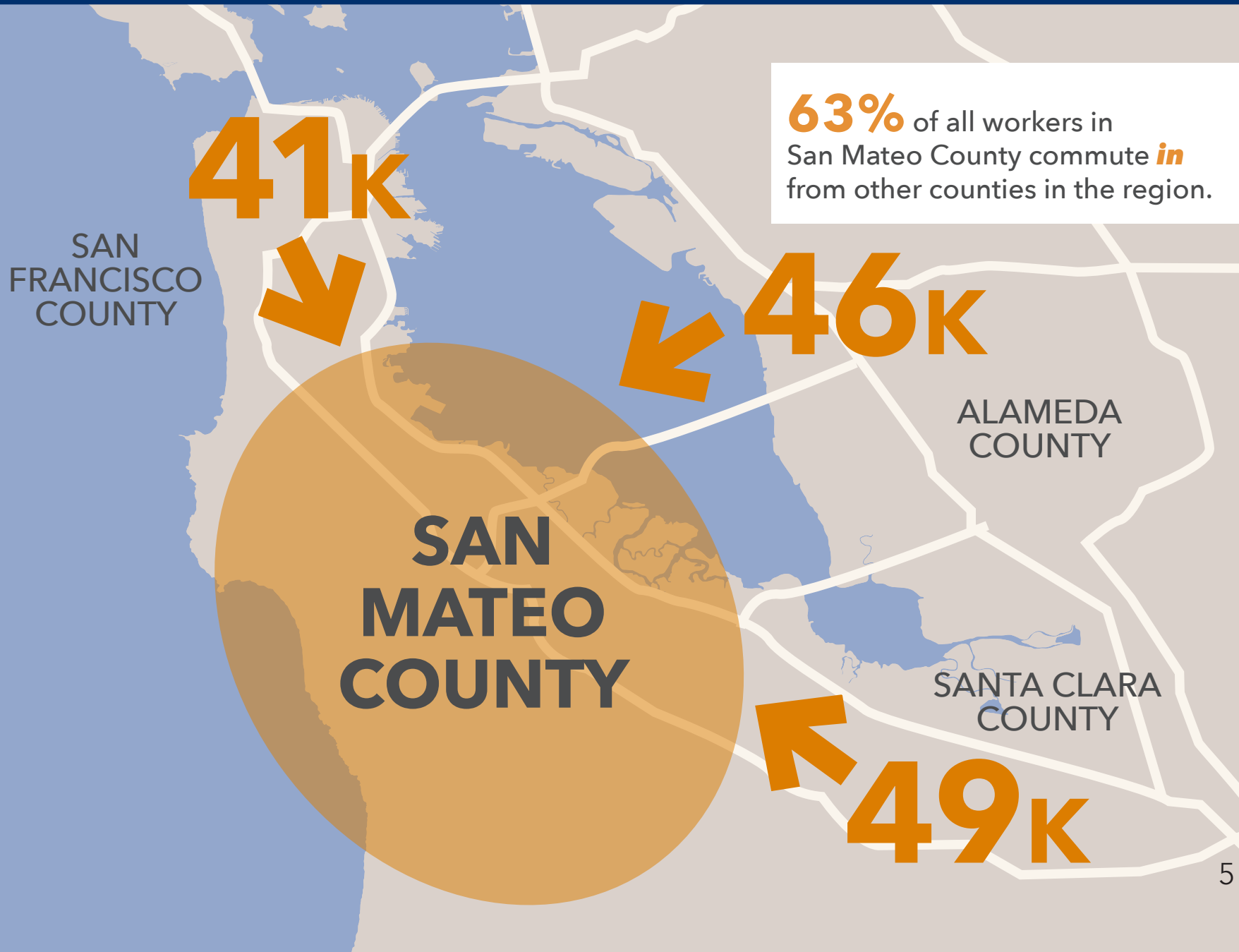
available workers*



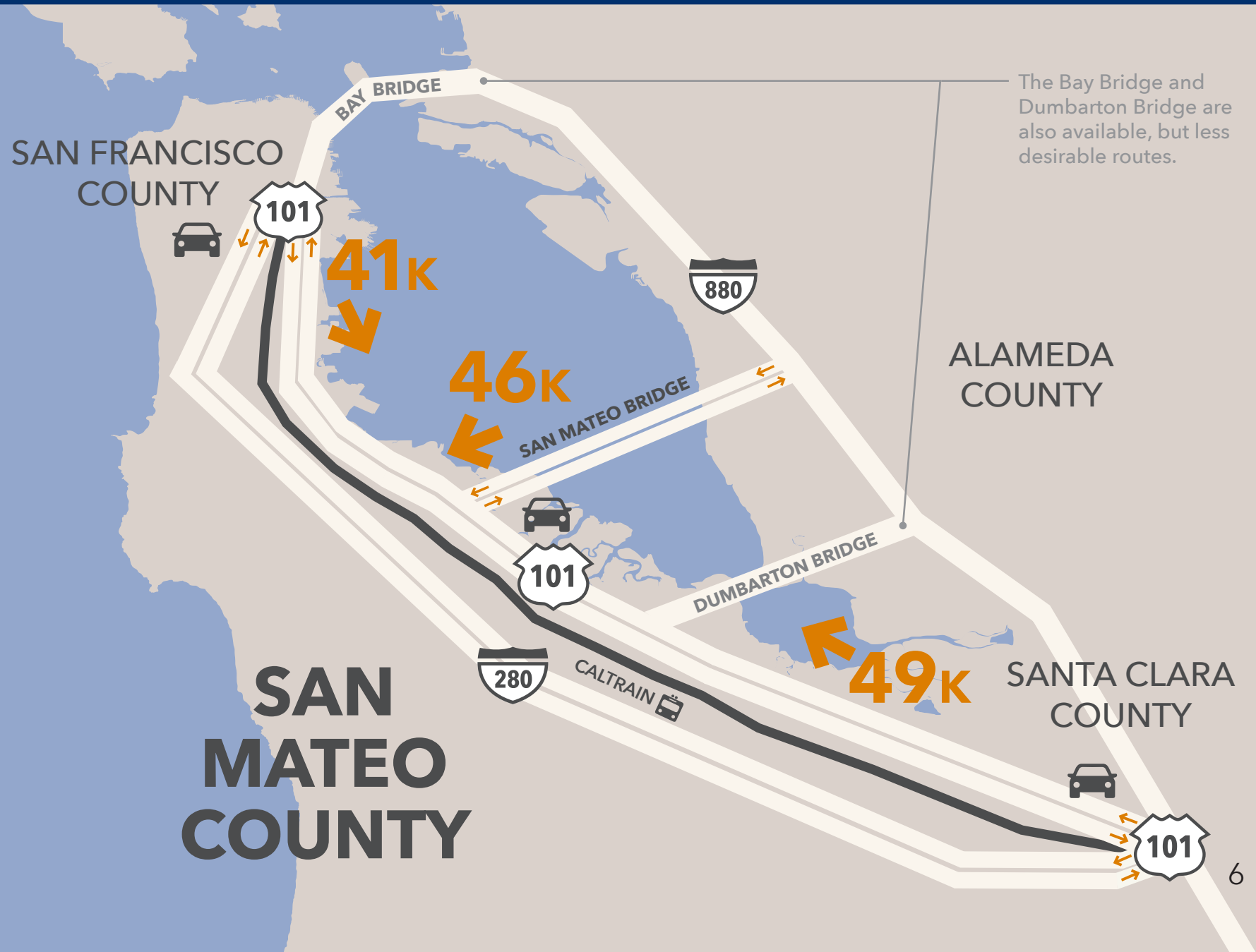
OUTER
EAST BAY

**available workers: the difference in growth between jobs and workers in Alameda and San Joaquin Counties.*

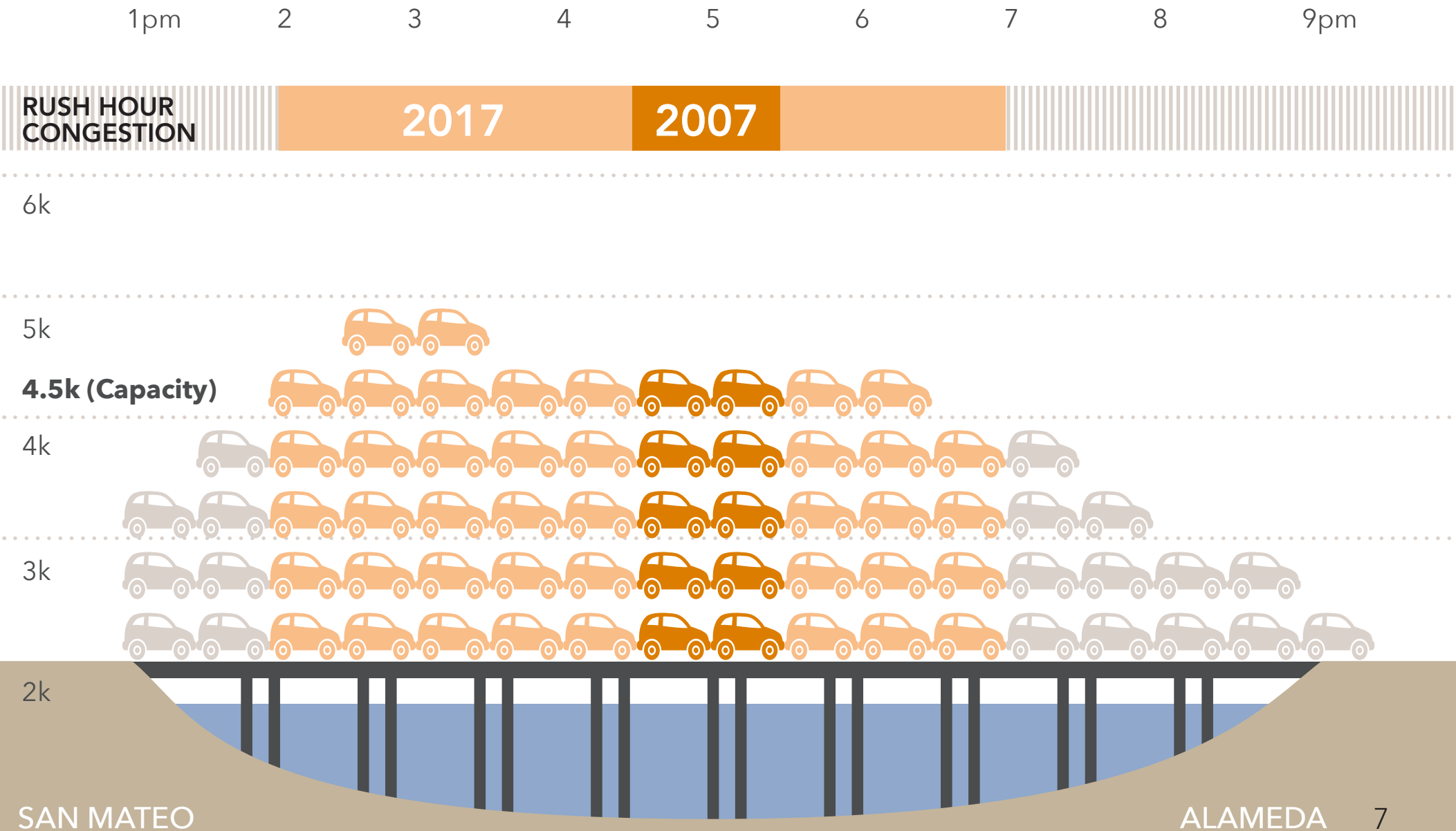
REGIONAL COMMUTE DESTINATION



MEANS OF COMMUTE



EVENING BRIDGE TRAFFIC

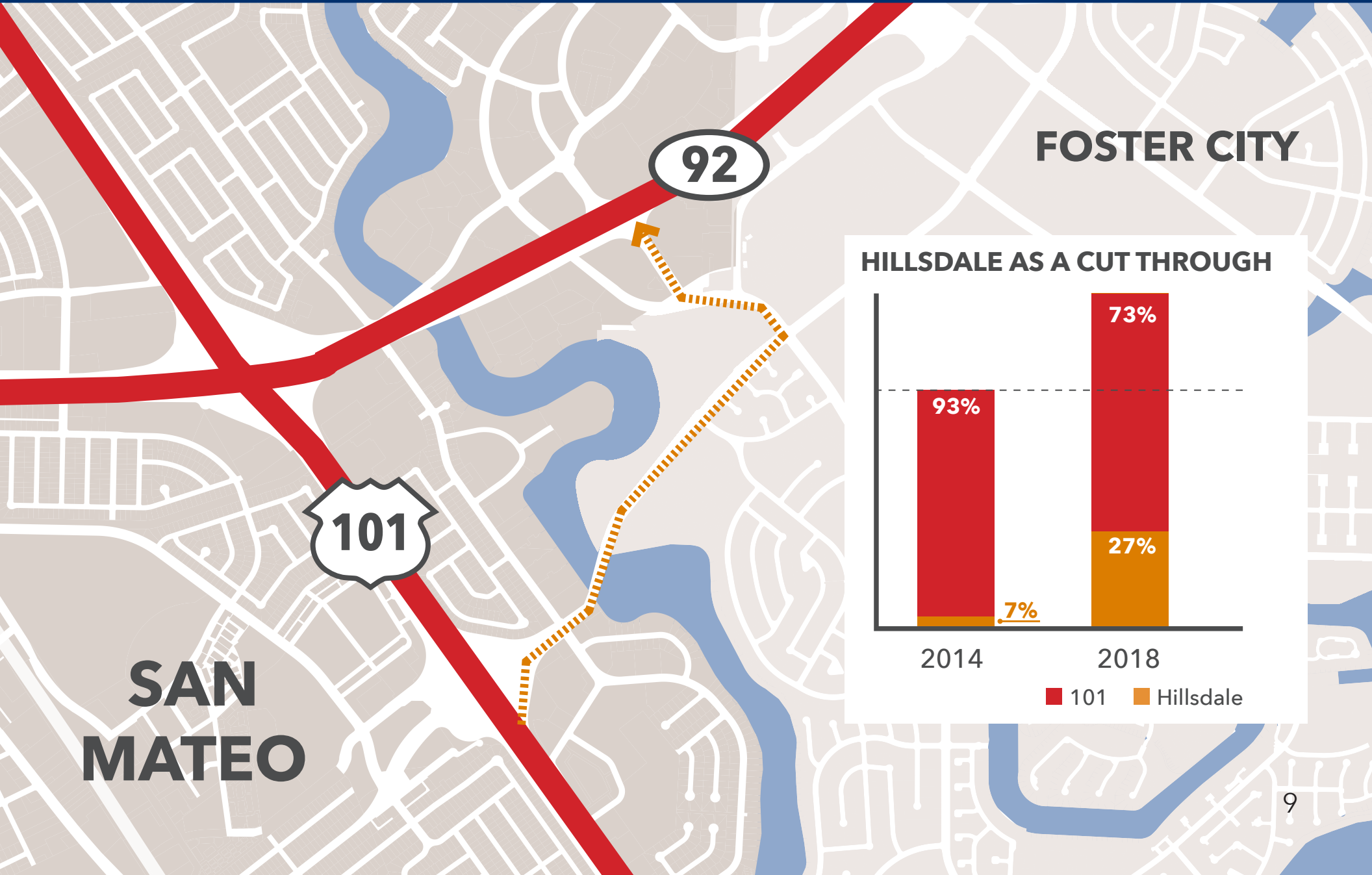


EVENING BRIDGE TRAFFIC

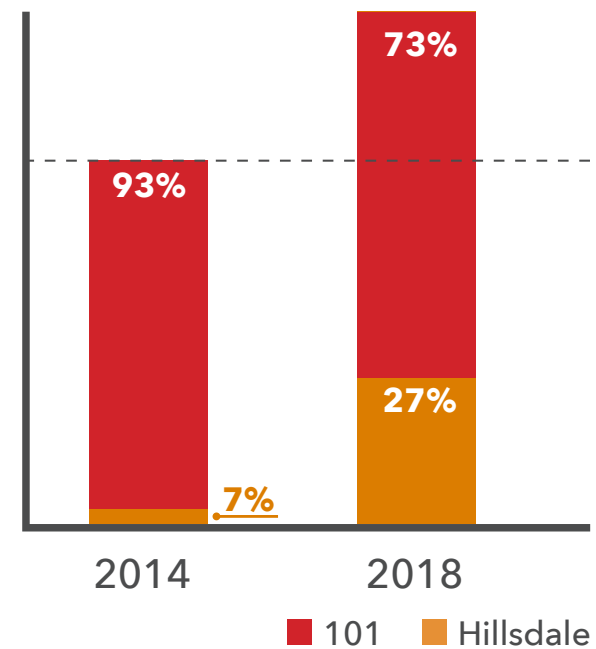
NOTE: Arrow weights indicate direction only,
and do not reflect traffic volume.



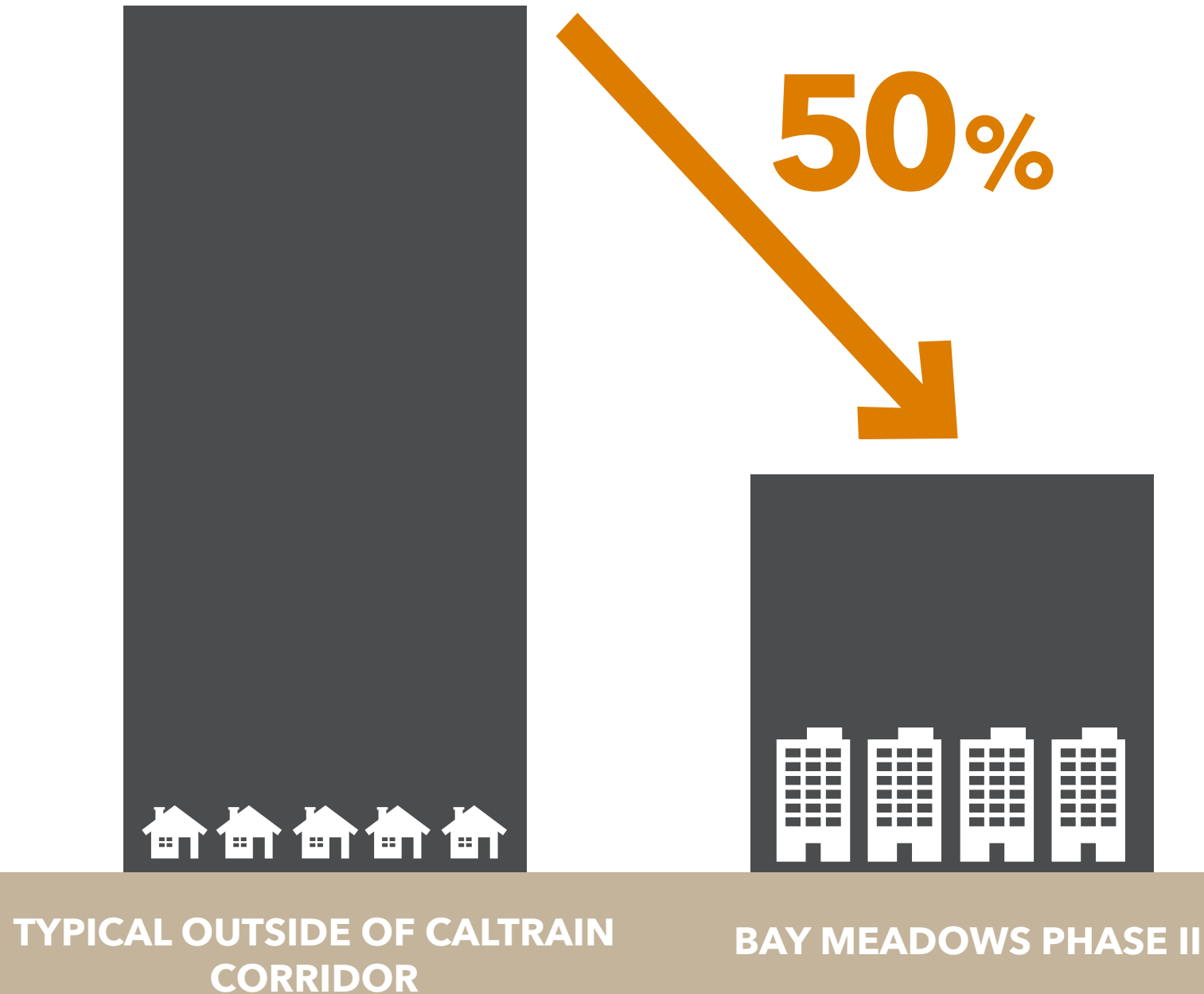
COMMUTER DETOUR ROUTES



HILLSDALE AS A CUT THROUGH



HOUSING IMPACTS ON TRAFFIC



Thank You.



Matt Goyne, PE

m.goyne@fehrandpeers.com

FEHR  PEERS

MORNING BRIDGE TRAFFIC

4am

5

6

7

8

9

10

11

noon

RUSH HOUR
CONGESTION

2017

2007

6k

5k (Capacity)

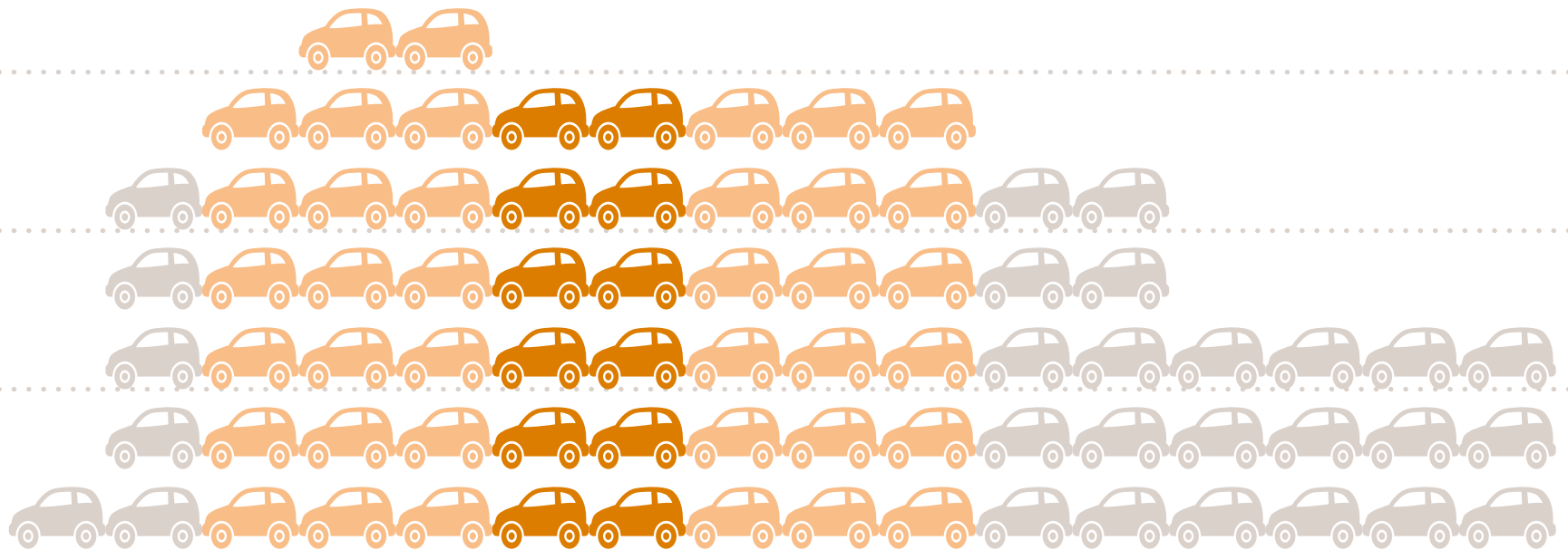
4k

3k

2k

SAN MATEO

ALAMEDA



MORNING BRIDGE TRAFFIC

NOTE: Arrow weights indicate direction only,
and do not reflect traffic volume.



EAST-WEST CIRCULATION CONSTRAINTS

2014



KEY

- Barriers
- Local routes connecting San Mateo to Foster City

2018



Bands represent proportion of people who use each roadway to cross the barriers during a typical weekday evening.

NEW DEVELOPMENT IMPACTS ON TRAFFIC

2014



2018



KEY

- Barriers
- Local routes connecting San Mateo to Foster City

Bay Meadows has also contributed to traffic at each of these routes. These numbers include office, residential, and shopping (e.g., Whole Foods) trips.