



City Council

Draft Goals, Policies, and Actions

October 3, 2022



General Plan Team

» City of San Mateo

- Zachary Dahl, Deputy Director
- Manira Sandhir, Planning Manager
- Brian Alexander, Senior Mgmt. Analyst
- Bethany Lopez, Senior Engineer
- Linda Ly, Associate Planner
- Mary Way, Administrative Assistant

» Technical Advisory Committee

- Over 40 staff members from all City departments and SMCFD

» Consultants

- Joanna Jansen, PlaceWorks
- Carey Stone, PlaceWorks
- Angelica Garcia, PlaceWorks
- Evelia Chairez, PCRC
- Sabina Mora, Good City Co
- Nelson\Nygaard
- Kittelson Associates, Inc.
- Economic & Planning Systems (EPS)
- BKF Engineers



Tonight's Agenda Discussion

- » **Presentation**
- » **Clarifying Questions**
- » **Public Comment**
- » **Council Discussion and Direction**



Objectives for Tonight

» Overview of:

- Conservation, Open Space and Recreation Element
- Public Services and Facilities Element
- Noise Element
- Circulation Element

» Receive public comments

» City Council discussion and direction on:

- Conservation, Open Space, and Recreation Element
- Public Services and Facilities Element
- Noise Element
- Circulation Element

Updated Goals, Policies, and Actions

- » Updated policies included in Agenda Report Attachments 6 to 9
- » Incorporates community, GPS, and Planning Commission feedback
- » Original policy followed by suggested revision in track changes

POLICIES

Policy C-P1.1

Sustainable Transportation. Reduce [Greenhouse Gas \(GHG\)](#) emissions from transportation by increasing mode shares for sustainable travel modes such as walking, bicycling, and public transit.

Policy C-P1.2

Complete Streets. Apply complete streets design standards to future projects both in the public right-of-way and on private property. Complete streets are streets designed to facilitate safe, comfortable, and efficient travel for all users regardless of age or ability or whether they are walking, bicycling, taking transit, or driving.

***Complete Streets.** Apply complete streets design standards to future projects both in the public right-of-way and on private property. Complete streets are streets designed to facilitate safe, comfortable, and efficient travel for all users regardless of age or ability or whether they are walking, bicycling, taking transit, or driving, and should include landscaping and shade trees as well as green streets stormwater infrastructure to reduce runoff and pollution.*

Policy C-P1.3

Vision Zero. Work towards eliminating traffic fatalities and serious injuries. Use a safe systems approach for transportation planning, street design, operations, emergency response, and maintenance that proactively identifies opportunities to improve safety where conflicts between users exist.

***Vision Zero.** ~~Work towards eliminating traffic fatalities and serious injuries.~~ Use a safe systems approach for transportation planning, street design, operations, emergency response, and maintenance that proactively identifies opportunities to improve safety where conflicts between users exist to eliminate traffic fatalities and serious injuries in our roadways.*

Project Overview

General Plan: Vision Statement

San Mateo is a vibrant, livable, diverse, and healthy community that respects the quality of its neighborhoods, fosters a flourishing economy, is committed to equity, and is a leader in environmental sustainability.

Our Values:

Diversity

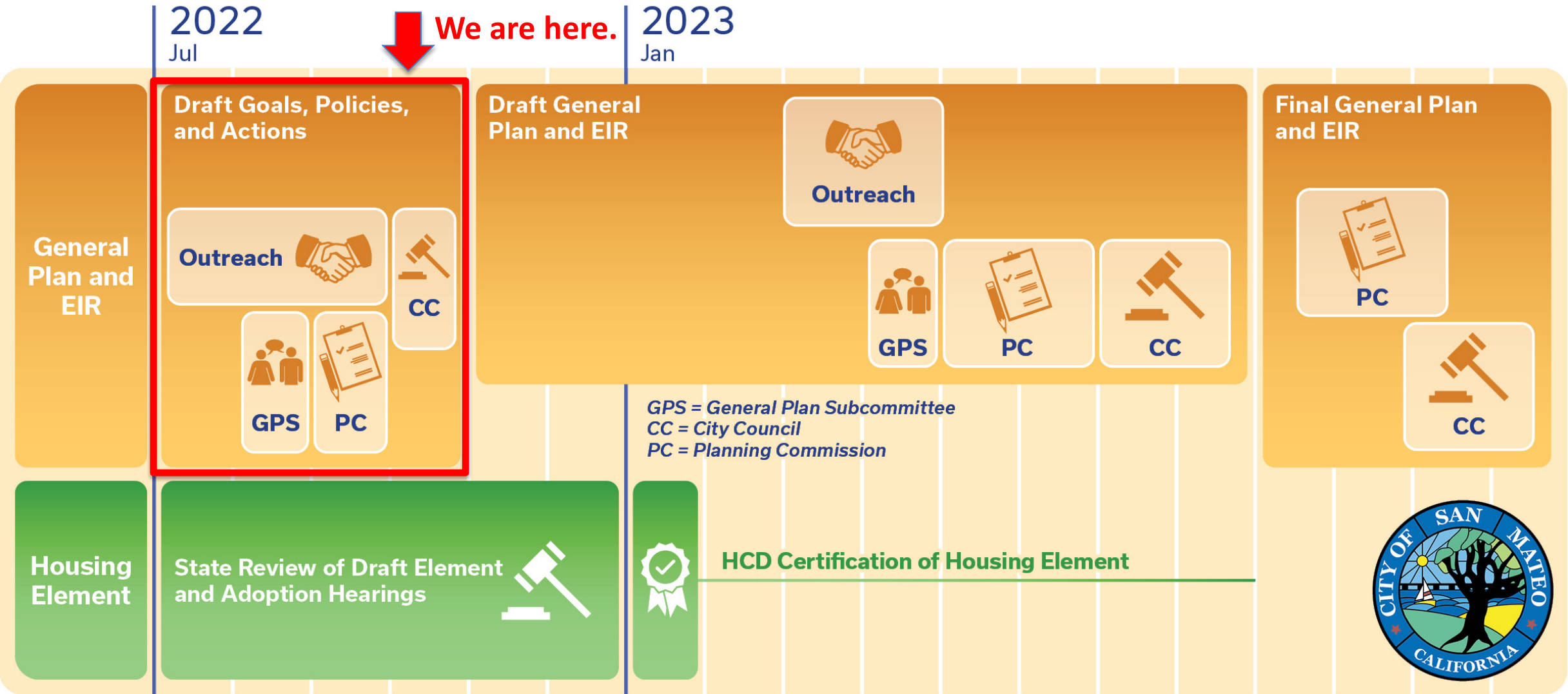
Balance

Inclusivity

Prosperity

Resiliency

Where Are We Now and What's Next?



General Plan Elements

- 2. Land Use**
- 3. Circulation**
- 4. Housing (prepared separately)**
- 5. Community Design and Historic Resources**
- 6. Conservation, Open Space, Parks and Recreation**
- 7. Public Services and Facilities**
- 8. Safety**
- 9. Noise**

General Plan – Other Components

1. Introduction

[Elements – 2 through 9]

10. Appendices

11. Glossary

12. Acknowledgements

13. Implementation Plan (separate from General Plan)

- Explains how actions will be implemented
 - Who is responsible
 - Timing
- Tracks progress
- Finalized after completion of the General Plan

Community Outreach and Engagement

Community Engagement

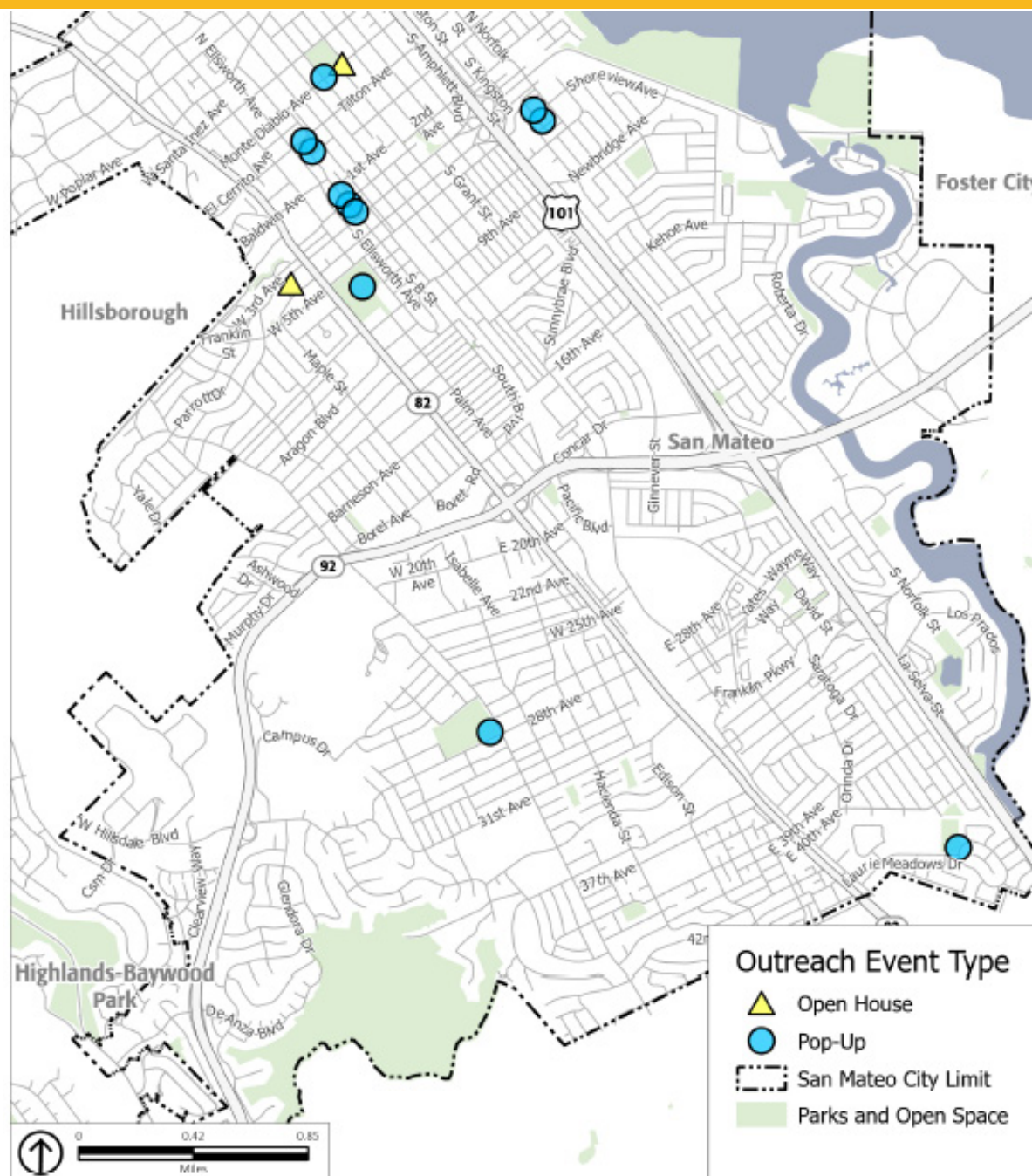
Meeting details and information available at:

www.StriveSanMateo.org

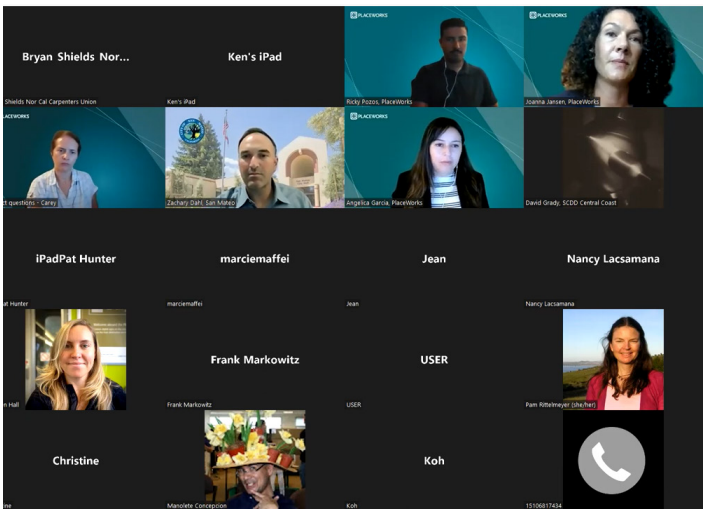
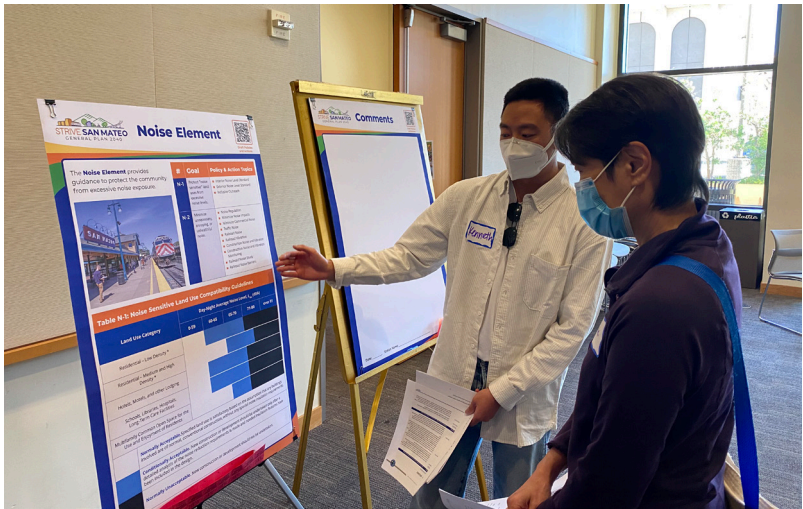
Date	Outreach Event	# of Participants
Late July	Citywide Newsletter	Mailed to every household in San Mateo
Late July through mid-October	Draft Policies and Actions Online Survey	209*
Tuesday, August 23, 2022	Video Loco Pop-up	25
Thursday, August 25, 2022	Video Loco Pop-up	20
Friday, August 26, 2022	Chavez Market Pop-up	15
Saturday, August 27, 2022	Rediscover San Mateo Community Fest Pop-up	140
Tuesday, September 6, 2022	Chavez Market Pop-up	50
Thursday, September 8, 2022	Virtual Community Workshop	26
Friday, September 9, 2022	Movies in the Park Pop-up	50
Saturday, September 10, 2022	Spanish Language Workshop	4
Saturday, September 10, 2022	September Nights on B Street Pop-up	30
Thursday, September 15, 2022	September Nights on B Street Pop-up	15
Friday, September 16, 2022	Movies in the Park Pop-up	50
Saturday, September 17, 2022	Open House	30
Thursday, September 22, 2022	September Nights on B Street Pop-up	31
Friday, September 23, 2022	Movies in the Park Pop-up	25
Saturday, September 24, 2022	San Mateo Firefighters Association Chili Cook-off Pop-up	45

**Online Survey results as of October 3rd; Online Survey is open through October 14th.*

Outreach Events Throughout San Mateo



Community Engagement



Community Engagement

» General Plan Subcommittee Meetings

- August 11th, August 18th and August 30th

» Planning Commission Meetings

- September 13th and September 27th

» City Council Meetings

- October 3rd and November 7th

Future City Council Meetings on General Plan

» **Spring 2023 – Measure Y Discussion**

- City Council study session

» **Summer 2023 – Draft General Plan**

- Three City Council meetings

» **Late 2023 – Adoption Hearings**

- Two City Council meetings

Draft Goals, Policies and Actions

How Goals, Policies, and Actions Fit In

» Each Element will include the following components:

- Background information and context narratives
- Maps
- Photos and illustrations
- Goals
 - Policies
 - Actions

General Plan Background Information Narrative

- » Provides data, information and other details relevant to the Element
- » Sets the context for goals, policies and actions
- » Succinct and enduring information

E. EMERGENCY OPERATIONS

BACKGROUND

The City prepared a Multi-Hazard Functional Plan (MHFP) in 1995 as required by the California Emergency Services Act. Additionally, as required by FEMA, the City adopted a Local Hazard Mitigation Plan (LHMP) in 2002. Both of these plans define the City's planned response to emergency situations such as fire, earthquake, flood, hazardous materials spill, civil disturbance or war.

The City's Emergency Operations Center (EOC) is located at the Police Department at 200 Franklin Parkway. The center contains emergency supplies and equipment and would serve as a communications and administrative headquarters. Since the EOC is located in the flood plain, an alternate EOC is located at Fire Station 7, 1801 De Anza Boulevard. The MHFP identifies fourteen possible shelter locations at school sites, including the College of San Mateo.

GOALS AND POLICIES

GOAL 4: Minimize potential damage to life, environment and property through timely, well-prepared and well-coordinated emergency preparedness, response plans and programs.

POLICIES:

S 4.1: **Emergency Readiness.** Maintain the City's emergency readiness and response capabilities, especially regarding hazardous materials spills, natural gas pipeline ruptures, earthquakes, and flooding due to dam failure, tsunami, peak storms and dike failure. Increase public awareness of potential hazards and the City's emergency readiness and response program.

Emergency readiness depends upon maintenance of an updated and useable Multi-Hazard Functional Plan, trained personnel through frequent emergency drills, and functional emergency equipment, particularly emergency communications, power supplies and vehicles. The public should be made aware of potential dangers, particularly those living or working in areas subject to inundation, and of contingency plans or information sources. Education and training programs, such as the San Mateo Community Emergency Response Team (CERT) and the biyearly City staff emergency drills, helps to increase the public's awareness and increase the emergency readiness of the City.

What is a Goal, Policy and Action?

- » A goal is a description of a general desired result.
- » A policy regulates activities in the City, guides decisionmaking and directs ongoing efforts as the City works to achieve a goal.
- » An action is a measure, procedure, or technique intended to help reach a specified goal or implement a policy.

Draft Goals, Policies and Actions Process

- » **Review existing General Plan goals, policies, and actions**
 - Staff review from all departments
 - What works? What's not working well? What's been completed or is no longer relevant?
 - Add new content to respond to current State requirements
- » **Revise and add based on input and direction from:**
 - Community members
 - General Plan Subcommittee
 - Planning Commission
 - City Council
- » **Prepare updated goals, policies, and actions**

Conservation, Open Space and Recreation

Conservation, Open Space and Recreation

- » **Environmental Stewardship**
- » **Access to Nature**
- » **Water Quality, Creeks and Riparian Areas**
- » **Air Quality**
- » **Hillsides**
- » **Archaeological Resources and Tribal Cultural Resources**
- » **Parks and Recreation**



Community Feedback

Conservation, Open Space and Recreation

- » **Maintain and preserve heritage trees**
- » **Add fire prevention measures in open space**
- » **Improve and increase parks, recreation facilities, and trails**
- » **Use drought tolerant landscaping in City parks**
- » **Encourage solar panels**
- » **Reduce light pollution**



GPS Feedback

Conservation, Open Space and Recreation

- Address public accessibility of private open spaces, including signage.
- Address the lack of access to recreational facilities for neighborhoods east of El Camino Real and especially east of 101.
- Add language about public spaces that are age-integrated and offer spaces for teens.
- Strengthen references to local school districts and mutual collaboration in support of recreational access.
- Confirm that the parks figure accurately reflects facilities at Bayside/Joinville (school district property), Dale Avenue, and Station Park Green.
- Add an Action under Goal COS-2 to develop a volunteer stewardship program, especially as the City opens up access to creeks.
- Goal COS-4 should acknowledge the importance of reducing vehicle miles traveled as a way to improve air quality.
- Goal COS-6 could include an action to modernize and make more accessible data that the City has on areas with high archaeological sensitivity.
- Policies under Goal COS-9 should mention wi-fi, water fountains, and restrooms public amenities offered in park and recreational facilities.
- Consider an action under Goal COS-10 to do more frequent surveys of residents to ask about park and recreation amenities.
- Add an Action under Goal COS-11 to identify new funding sources for parks and recreation facilities.

Planning Commission Recommendations

Conservation, Open Space and Recreation

- Agree with GPS comments on this element.
- Change the word “manage” to “maintain” or “protect” in Policy COS-P1.6.
- Remove the hatch on Borel Park in Figure COS-3 because the park is already developed. Add the hatch on the undeveloped open space area on Dale Avenue.
- Add a policy or action about reducing light pollution; however, do not conflict with public requests for better lighting and pedestrian safety. Think about the neighborhood context and their priorities on reducing light pollution versus having better lighting for safety reasons.
- Support Goal COS-5, it is important to keep this goal.
- Add or revise policy COS-P3.2 to “protect and restore creeks to a level acceptable for healthy marine and bird habitat.”
- Add a new policy under Goal COS-4 that discourages new housing development within 500 feet of high volume roadways averaging more than 100,000 daily trips. Maybe one of the ways we could allow housing development near high volume roadways is if an applicant completes a computational modeling to show there will not be impacts. This policy should be an environmental justice policy.
- Revise Goal COS-6 to include “encourage projects to recognize historical tribal lands.”
- Add a policy under Goal COS-8 to include an equitable access analysis in park master plans to identify deficiencies and solutions and funding to fix these deficiencies.
- Add the following policies or actions below Goal COS-10:
 - Eliminate gas powered equipment and eliminate toxic fertilizers and chemicals from being used in the parks over time. Sustainable park design should consider what kind of equipment is necessary.
 - Implement a 10-year plan to repurpose the golf course into a higher and better use as identified by outreach and surveys. Do not specify the use in the policy or action, instead leave it open for discussion.

Planning Commission Recommendations (cont.)

- Add “habitat” to the list of uses in Policy COS-P10.2.
- Revise Action COS-A10.5 to prioritize beautification efforts in equity priority communities over wealthier neighborhoods.
- Add “creating a park system that is best in class or sets a standard for the Bay Area” in Goal COS-11.
- There was a discussion about whether leaf blowers should be banned due to air quality, noise, and health concerns. The PC suggested adding a policy or action that bans gas-powered leaf blowers within the public right-of-way.
- Add a new policy to “ensure a balanced set of funding sources that is comprised of annual budget dollars and new development impact fees each in proportion to its impact on parks and recreational facilities to provide a stable funding source.”
- Add a new action to “evaluate the City’s annual budget to identify funding sources for impacts on parks and recreation facilities caused by existing development, as needed. Identify other funding sources including but not limited to a bond.”
- Add a policy or goal that supports efforts to create passive recreation that connects parks and certain nodes, such as Downtown, to increase connectivity on select public right-of-ways for runners and pedestrians.
- Composting is a State requirement for homes and businesses. Address composting in City parks in the General Plan. There should be compost receptacles in City parks. We should also use a special smaller electric garbage trucks to service parks.
- Encourage volunteering programs at parks.

Public Services and Facilities

Public Services and Facilities

- » **Community Safety**
- » **Water Supply**
- » **Sewer and Storm Drainage**
- » **Public Services and Facilities**
- » **Children, Youth, and Schools**
- » **Healthcare and Social Services**
- » **Solid Waste**



Community Feedback

Public Services and Facilities

- » **Improve police and fire response times**
- » **Increase police street patrol**
- » **Support the homeless**
- » **Improve wellness resources**
- » **Improve access to healthy food**
- » **Reduce food and construction waste**

GPS Feedback

Public Services and Facilities

- Consider whether we need to add more policies about code enforcement.
- Sewer laterals upgrades, maintenance and replacement should be covered in the General Plan to address leakage.
- Add “as needed” after new fire stations in Policy PS-P1.3. Fire stations are a very expensive investment.
- Add a policy that encourages existing homes to convert to water efficient landscaping under Goal PS-2.
- Mention greywater and potable water in Action PS-A2.1. Also, reference the City’s water treatment facility where there are ongoing measures to produce greywater and potable water. Maybe there is more that can be done to encourage greywater systems in residential and commercial buildings.
- Include stronger language about water conservation in Policy PS-P2.2.
- Add the word “coordinate” to action PS-A3.1.
- Add “and bay” after lagoons at the end of Policy PS-P3.3. Simplify and make this policy stronger.
- Mention bicycle and pedestrian projects in Action PS-A3.3.

GPS Feedback (cont.)

- **Mention bicycle and pedestrian projects in Action PS-A3.3.**
- **Add “consider” at the beginning of Policy PS-P4.3.**
- **Add language that encourages green space in Policy PS-P4.9.**
- **Under Goal PS-5, add a policy or action about encouraging the development of licensed preschool facilities. Work with school districts to provide more before and after school programs.**
- **Agree with Policy PS-P5.2, but rewrite the policy to make it more clear. Explain what “compatible with surrounding land uses” means.**
- **Emphasize non-residential development in Action PS-A5.2.**
- **Revise Policy PS-P5.5 to address inadequacies in existing childcare facilities.**
- **Add a policy under Goal PS-6 about distributing health centers throughout the city to make sure they are accessible. Also add a policy about mobile health care, perhaps the City can help support the County’s efforts.**
- **Ensure Policy PS-P6.3 balances the need for social services in each community while also ensuring that services are not concentrated in one area.**
- **Add nonprofits and community based organizations to Policy PS-P6.4. Revise this policy to say “support vulnerable populations by prioritizing reduction of vulnerabilities” and then list nonprofits and religious groups to help.**

Planning Commission Recommendations

Public Services and Facilities

- Correct the name of the element, in some places it is labelled as facilities or infrastructure.
- Support continuing to try to find a downtown facility as mentioned in Policy PS-P4.3.
- Delete the first sentence of Policy PS-P5.2. Change the word “city” to “community” in the fourth sentence. Make it clear in the policy that this would apply to any school district land that becomes available. Leave in “community recreation needs” in the policy. Housing and community recreation uses should be the first priority for these sites.
- Change “continue to allow” to “encourage” in Policy PS-P5.6.
- Clarify a comment made in the GPS meeting about Goal PS-2. Add a new policy to “encourage ~~existing homes~~ all properties to convert to water-efficient landscaping over time”.
- Expand policy PS-P5.5 to not only mention child care centers, but also include public facilities in general as places that support child development. Change “retain” to “improve” in this policy.
- Add a policy or action to study and implement water regulations related to water conservation. Set a maximum gallons per day quota of 40 gallons and implement this policy through Cal Water and the City Council. City has taken position that it does not control its water supply for decades, but we have the tools to have major impacts on water supply.
- The wastewater treatment plant mentioned in Policy PS-P3.4 is the most important infrastructure in the city. The General Plan should consider impacts to the plant from sea level rise. Figure out how to at least use some recycled water for irrigation, groundwater recharge.
- Add “public restroom facilities” to Policy PS-P4.1 or create a separate policy about increasing public restroom facilities.
- Combine Policy PS-P4.4 and Policy PS-P4.5 or make these policies more distinct since they both cover libraries.
- Policy PS-P5.1 is too broad. Include the same level of specificity as the policy about effective police and fire services.
- One commissioner would like to study barriers to creating new child care centers and try to address those barriers but City Staff noted that these facilities are licensed through the State and County and the City’s only role is related to the physical location of the facility.
- Revise the first sentence in action PS-A2.1 to make this action stronger.
- Action PS-A3.3 seems unnecessary.

Noise

Noise

- » **“Noise Sensitive” Land Uses**
- » **Minimization of Unhealthy Noise**



Community Feedback

Noise

- » **Reduce Caltrain noise**
- » **Reduce aircraft noise**
- » **Reduce noise from vehicles**
- » **Prohibit gas blowers**
- » **Reduce the use of illegal fireworks**

GPS Feedback

Noise

- **Revise Policy N-P1.2 to add a reference about outdoor equipment such as leaf blowers and two-stroke engines. Maybe the policy can be revised to list the known noise irritants. Consider adding a reference about outdoor equipment in Policy N-P2.1.**
- **Consider whether the roads mentioned in Policy N-P2.4 will actually be widened since Caltrans has been deprioritizing widening of roads.**
- **City could help reduce traffic speeds in Policy N-P2.4 since they are a noise generator.**
- **Emphasize or add more about railroad noise.**

Planning Commission Recommendations

Noise

- Add an action to “do monitoring to gather more quantitative data on existing noise nuisances” below Goal N-2. For example, ambient noise levels around schools, along the railroad corridor, along Highways 92 and 101, and other noise sources of interest. Then use the data to put policies in place to target nuisance noise sources.
- Add language about banning leaf blowers.
- Add a policy that “County Hospital should maintain equipment to minimize noise for adjacent residential areas”.
- Revise policy N-P2.7 to include “require” instead of “continue to.”

Circulation

Circulation

- » **Multimodal Transportation**
- » **Transportation Demand Management**
- » **Pedestrians**
- » **Bicycles and Micromobility**
- » **Transit and Mobility Services**
- » **Roadway Improvements**
- » **Parking Management**
- » **Future Mobility and Technology**



Community Feedback

Circulation

- » **Reduce/eliminate traffic fatalities**
- » **Improve safety for all travel modes**
- » **Improve pedestrian and bicycle infrastructure**
- » **Reduce traffic congestion**
- » **Reduce speeding**
- » **Improve transit**
- » **Add electric vehicle charging stations**
- » **Add street lighting citywide**
- » **Improve roadway conditions**



GPS Feedback

Circulation

- Support for many of the revisions requested in the letter submitted by Move San Mateo.
- Add a threshold for the size of development when we say “require new developments to” in the policies and actions. Applying requirements for new development makes sense for larger projects.
- Replace walking, bicycling and transit everywhere it appears with “transit and active transportation modes”. A few subcommittee members disagree and believe the General Plan should include commonly known terms.
- Add an action under Goal C-1 that requires implementation of the pedestrian and bicycle infrastructure outlined in the Circulation Map anytime a roadway is resurfaced. This is partially covered by Action C-A4.2, but it only mentions bicycle infrastructure and could be expanded to include pedestrian infrastructure.
- **Revise Policy C-P1.3 as follows:**
 - Delete “works towards”.
 - Revise policy to say: Use a safe systems approach for transportation planning, street design, operations, emergency response, and maintenance that proactively identifies opportunities to “improve safety where conflicts between users exist in order to eliminate traffic fatalities and serious injuries in our roadways”.
- **Revise Policy C-P1.5 to address high capacity travel, facilitate efficient travel, and limit left turns during high traffic hours. However, there may not be much the City can do because El Camino Real is a State road.**
- **For Action C-A1.5, study not only where people already go, but where they would like to go and build routes around their needs.**
- **Clarify the word “consider” in the second sentence of Action C-A2.1.**
- **Be more specific about “safe routes to school” in Action C-A2.5.**
- **A few subcommittee members would like to revise Action C-A2.7 to say “required” instead of “encourage”, but some believe the General Plan should stay high level.**

GPS Feedback (cont.)

- **Modify Policy C-P3.2 to require the widest sidewalks that are feasible and comfortable.**
- **Unsure why Policy C-P3.4 is under the pedestrian goal.**
- **Action C-A3.1 should be revised to clarify that there is an urgent need for implementation of pedestrian improvements.**
- **Add increasing sight lines and removing conflicts at the cross walks to Action C-A3.5. There should be an action about the visibility at cross walks for pedestrians.**
- **Change “transit centers” to “community destinations” in Policy C-P4.3.**
- **Add “undercrossings” in Action C-A4.3.**
- **Add “at intersections” to Action C-14.6.**
- **There is a transit operator shortage not ridership shortage. Maybe we need to change the focus to “increasing the service” instead of “increasing ridership” in Policy C-P5.1.**
- **Break Policy C-P5.5 into two policies. Also, revise the policy to educate the public about all alternative travel modes, not just transit.**
- **Do not limit Action C-A5.2 to only include disadvantaged communities. There should be a focus on disadvantaged communities, but the action should be expanded to other areas.**
- **Explain what vehicles miles traveled per capita is in Goal C-6. Say “efficient and safe” operations and also say “residents” instead of “modes”.**
- **Revise Policy C-P6.4 to include a reference to improving the City’s process to request and receive traffic calming measures on residential streets.**

GPS Feedback (cont.)

- One subcommittee member would like Action C-A7.2 revised to say “implement” instead of “evaluate”, but another subcommittee member disagreed.
- Revise Action C-A8.4 to address data privacy. Do not limit the action to new technology options, we should require this from public transportation as well.
- Prioritize traffic calming measures in Goal C-6 and focus on areas with the highest vehicle collisions. Add an action under this goal that calls for annual vehicles, pedestrian and bicycle counts at different intersections to measure how the City is doing.
- Add an action that requires new development in Downtown to have shared parking agreements that allows the public to use the parking space in the evenings. One subcommittee member believes we should remove existing public parking spaces if we are adding more public parking opportunities in Downtown.
- Add a new policy or action about education under Transportation Demand Management. There are programs out there where people can trade in their car to get transit and e-bike credits.
- Add a policy or goal about connecting neighborhoods or reducing barriers to help traffic flow, for example there is a wall that separates the Shoreview neighborhood and the new parks on J Hart Clinton Drive.
- Place a stronger emphasis on traffic efficiency, infrastructure, traffic calming, and parking in the Circulation Element. One subcommittee member believes the focus should be on getting people out of their cars, which helps reduce traffic.
- In addition to greenhouse gas emissions, also reference vehicle miles traveled in the goals of this element.
- Consider how some of the emerging technology trends could change the city if they actually came into fruition.
- Add an action about school safety speed zones.
- Make sure we are prioritizing local projects, not only regional projects.
- Concern about scooter safety.

Planning Commission Recommendations

Circulation

- **Revise Goal C-1 to say “design and implement a multimodal transportation system that prioritizes walking, biking, and transit and...”.**
- **Agree with Sierra Club’s recommendation to add trees and green infrastructure to Policy C-P1.2.**
- **Revise policy C-P1.5 to say “prioritize high-capacity travel and pedestrian and bicyclist safety along El Camino Real”.**
- **Change “consider parking requirement reductions for projects that” to “reduce parking requirements for projects”. There should be room for City Staff to allow exceptions to this policy for unusual projects.**
- **Add “or other areas” to the list of destinations mentioned in Action C-A2.6.**
- **There was discussion about whether unbundled parking should be required under Action C-A2.7. The PC ultimately recommended to change the wording in the policy to start with “allow and encourage...”. There was also support for adding a new action to study the feasibility of requiring unbundled parking.**
- **Instead of industry standards, say “use American Disabilities Act requirements when implementing design standards” in Action C-A3.4.**
- **Add the words “and improvements” after “engagement” in Action C-A3.6 to support efforts to fund safe routes to school improvements. Also, this action is in the pedestrian section, but safe routes to schools are not just for pedestrians, it also includes bicyclists.**
- **Recommend adding a new policy that is titled “Safe Routes to School Master Plan.” This policy should encourage the creation of safe routes maps based on school boundaries. Map out the routes that are safe routes to the school, identify deficiencies and the capital improvement projects to fix those deficiencies, and fund the improvements. The new policy could be “Create a safe routes to school master plan” that includes is the details mentioned above.**
- **Add an action that requires pedestrian and bicycle infrastructure on the Preferred Circulation Scenario to be implemented anytime a roadway is resurfaced. Revise Action C-A4.2 to mention pedestrian infrastructure.**

Planning Commission Recommendations (cont.)

- **The following comments were made about Action C-A4.3:**
 - Strengthen the language; commit ourselves to go a bit further. Add text to this action that lays out a schedule to reallocate dollars where feasible from vehicle to bikeway improvements consistent with Goal C-6.
 - Concern the overcrossings at US 101 and SR 92 mentioned will not be constructed any time soon. Do not include goals, policies and actions that are infeasible.
- **Change “continue pursuing” to “maintain” in Action C-A4.4.**
- **Support for Action C-A4.5.**
- **Revise Goal C-6 to include “prioritizes user safety” after “achieve a transportation system that”.**
- **Revise Policy C-P6.6 to make it clearer that the desired outcome should be to prioritize projects that are primarily bike/ped rather than vehicular.**
- **Comments about Goal C-7 include:**
 - Add a sentence to or create a new policy that says “to plan for the reduction of public parking supply as a whole” which relates to the goal to reduce vehicular travel.
 - Look into a program where parking fees in certain areas are used for improvements for that neighborhood.
- **Add a policy that commits us to the long term plan to reduce public parking supply. There should text in this policy about “heavily scrutinizing any proposed increase in public parking supply”.**
- **Revise Policy C-P7.1 to focus on addressing street parking management more narrowly and eliminate references to land use changes that would be intended to indirectly result in parking changes.”**
- **There was discussion about whether the word “require” should be added to Policy C-P7.2 and the PC ultimately decided against requiring shared parking.**
- **Concern about data sharing language in Action C-A8.4. How will the data be used? Technology companies also have strict rules about data privacy.**

Planning Commission Recommendations (cont.)

- **The following items were discussed in connection with Move San Mateo's letter:**
 - Agree with the policies and actions in Move San Mateo's letter, except there should be more thought about the suggestion to add a new action related to capping Highway 101 from Peninsula Avenue to the Highway 92 interchange.
 - There was discussion about the suggested action to switch parking and bike lanes but the PC agreed the Complete Streets plan would be the best place to address this action.
 - There was discussion about the recommendations on speed governors and the PC agrees there should be language in the General Plan that supports a pilot program about speed governors.
 - There was a recommendation to incorporate the following policies and actions:
 - Review projects in the City's capital improvement plan based on their alignment with the State Climate Action Plan for transportation infrastructure and other climate goals. Modify our capital improvement projects based on the State Climate Action Plan for transportation infrastructure.
 - Establish a realistic, ambitious, time-based goal to complete all infrastructure projects outlined in the City's revised capital improvement program and improvements outlined in other plans. Identify increases in staffing levels needed to meet this goal.
 - Require the evaluation of the safety and quality of sidewalks fronting all properties at the point of sale. Require the existing or new owner to repair the sidewalk if minimum safety/quality conditions are not met. Provide exemptions for low income owners from this requirement. Prioritize sidewalk repair program funding for historically marginalized/equity priority communities and/or for low income individuals.
 - Adopt minimum traffic calming standards for all streets including but not limited to modal filters and speed cushions.
 - More aggressively pursue a shared micromobility operator, and work with the County and region to attract a multi-jurisdictional operator already operating in major cities in the region.
- **There are some policies and actions in the Circulation Element that are unclear. For example, the language in Action C-A7.4 should be clarified. Review and revise the draft goals, policies and actions in the Circulation Element to simplify and improve clarity.**
- **Prioritize the policies and actions connected with safe routes to school.**
- **Add a reference about superblocs somewhere in the General Plan, maybe it makes the most sense in the Circulation Element but the PC would not like this concept to get lost.**

November 7 Council Meeting Topics

» Land Use

- Balanced, Orderly, and Equitable Growth and Preservation
- Range of Land Uses
- Focused Planning Areas
- Environmental Justice
- Community Engagement
- Climate Change and Sustainability
- Sustainable Economy
- Development Review
- Regional Cooperation and General Plan Maintenance

» Community Design and Historic Resources

- Natural Landscapes and Urban Forest
- Historic Resources
- City Image

» Safety

- Emergency Readiness and Emergency Operations
- Geotechnical, Flood and Wildfire Hazards
- Sea Level Rise
- Hazardous Materials
- Energy Supply



City Council Discussion and Direction

» **Provide comments by element**

- Conservation, Open Space, and Recreation
- Public Services and Facilities
- Noise
- Circulation

» **Discussion questions:**

- Do you agree with the proposed revisions to the draft goals, policies, and actions, and the proposed new policies and actions in response to input received to date?
- Is there anything you would add or change?
- Should any of the policies be changed from a recommendation to a requirement or vice versa?
- Are there additional specific actions that should be added to support implementation of the policies?

» **Provide direction on the Goals, Policies and Actions that should be included in the City's Draft General Plan Update**

» **Keep discussion focused on content; please email grammatical or typographical edits to generalplan@cityofsanmateo.org**

City Council Discussion – Specific Topics

» **Conservation, Open Space and Recreation**

- Surveys and Funding
 - Additional policies/actions needed?

» **Public Services and Facilities**

- Childcare Facilities and Services
 - Additional policies/actions needed?

» **Circulation**

- Multimodal Infrastructure Prioritized
 - Public/GPS/PC comments focused on more specific prioritizations:
 - Traffic calming and safety measures
 - Bicycle infrastructure
 - Pedestrian Improvements and wider sidewalks
- Parking Policies
 - Need to update to align with recent State legislation
 - Overall direction on parking policy priorities?



Thank You



Clarifying Questions?

Public Comment

City Council Discussion

City Council Discussion

» **Provide comments by element**

- Conservation, Open Space and Recreation
- Public Services and Facilities
- Noise
- Circulation

» **Discussion questions:**

- Do you agree with the proposed revisions to the draft goals, policies, and actions, and the proposed new policies and actions in response to input received to date?
- Is there anything you would add or change?
- Should any of the policies be changed from a recommendation to a requirement or vice versa?
- Are there additional specific actions that should be added to support implementation of the policies?

» **Provide direction on the Goals, Policies and Actions that should be included in the City's Draft General Plan Update**

» **Keep discussion focused on content; please email grammatical or typographical edits to generalplan@cityofsanmateo.org**

City Council Discussion – Specific Topics

» **Conservation, Open Space and Recreation**

- Surveys and Funding
 - Additional policies/actions needed?

» **Public Services and Facilities**

- Childcare Facilities and Services
 - Additional policies/actions needed?

» **Circulation**

- Multimodal Infrastructure Prioritized
 - Public/GPS/PC comments focused on more specific prioritizations:
 - Traffic calming and safety measures
 - Bicycle infrastructure
 - Pedestrian Improvements and wider sidewalks
- Parking Policies
 - Need to update to align with recent State legislation
 - Overall direction on parking policy priorities?

BACK-UP SLIDES

Mode Prioritization

- » Strategy: Circulation GoPAs focused on a balanced approach for all modes of travel
 - Goals focus on multimodal approach to transportation rather than past vehicle-centric view
 - Changes were made to Policy C-P6.1 to remove vehicle-centric Level of Service metric and now focuses on maintaining “acceptable roadway operations” for all modes
 - Change in Goal C-6 to prioritize user safety allows for this to be prioritized when making decisions on what “acceptable roadway operations” looks like
 - Policy C-P1.2 focuses on implementing “complete streets design standards” which facilitate safe, comfortable, and efficient travel for all users regardless of age or ability whether they are walking, bicycling, taking transit, or driving.
- » Consideration to prioritize all modes besides vehicles suggests that congestion alleviation is no longer a priority
- » “Maximize opportunities to implement bicycle facilities through other City projects” as noted in C-P4.6 allows for ensuring that City streets are maintained above “failed” status
 - Funding Pavement Management Program to prevent failed streets offers long-term cost-effective approach
 - Bikes/peds/transit rely on well-maintained roadways
 - Pedestrian improvements are an ADA requirement for resurfacing projects

Parking Policy

- » Several comments about modifying parking policy for developments and on-street supply
 - Desire to reduce overall public parking supply
 - De-couple land use changes from on-street parking supply changes

- » Public Parking policies
 - C-P7.3 – Public parking: Maximize opportunities to expand existing parking supply by supporting public/shared parking at private developments and allow developers to fund public parking in-lieu of meeting parking demand/requirements on-site
 - C-P7.5 – Curbside management: Manage supply and utilization of the curb to maintain balance between mobility, storage, placemaking, and loading uses allowing for flexibility for re-use, safety improvements, and activation of curb space where possible

- » Changes to parking policy at the state level
 - AB 2097 removes parking minimums within ½ mile of transit

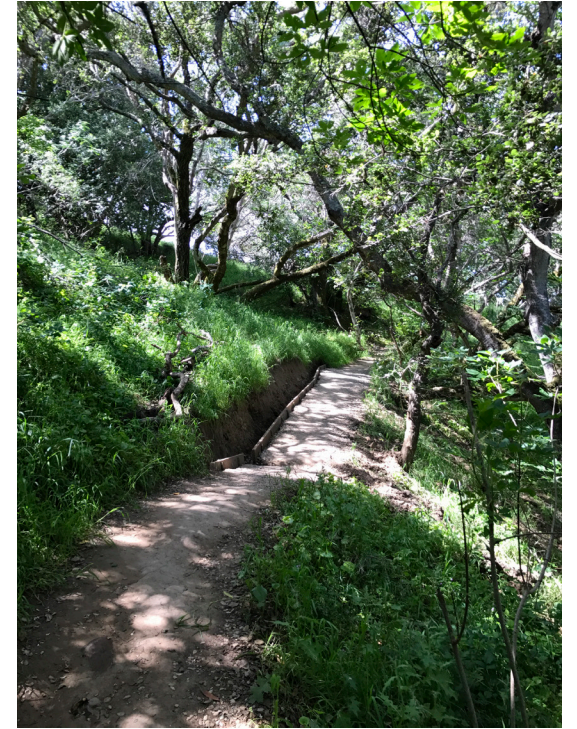
- » TDM Requirements and Ordinance (C-P2.1 & C-P2.2)
 - Policies will guide development of a comprehensive approach to reducing single occupancy vehicles and ability to leverage reduced parking requirements for projects that include TDM measures
 - Policy will allow for development of context-sensitive recommendations that can ensure parking supply is appropriately accounted for
 - Allows for the evaluation of effective measures and monitoring success

Conservation, Open Space and Recreation

Conservation, Open Space and Recreation

» Environmental Stewardship

- Protect and enhance the City's natural resource areas that provide plant and animal habitat and benefit human and ecological health and resilience. (Goal COS-1)
 - Sensitive natural communities protection
 - Interjurisdiction coordination
 - Natural resource site evaluations
 - Development near wetlands or water regulation
 - Wetland development mitigation
 - Bird Island management



Other Important Agencies/Plans

- Park Master Plans

Conservation, Open Space and Recreation

» Access to Nature

- Ensure that current and future generations will enjoy the environmental, social, health, and economic benefits derived from access to our urban forest, parks and open spaces. (Goal COS-2)
 - Sustainable public access
 - Equitable conservation
 - Shoreline interpretive opportunities
 - Lagoon and Shoreline public access
 - Sugarloaf Mountain management and interpretive opportunities
 - Improvements to Bayfront Nature Area



Other Important Agencies/Plans

- Park Master Plans

Conservation, Open Space and Recreation

» Water Quality, Creeks and Riparian Areas

- Protect and improve San Mateo's creeks as valuable habitat, green infrastructure, and components of human and environmental health. (Goal COS-3)
 - Stormwater runoff and pollution minimization
 - Water quality standards
 - Aesthetic and habitat values – public and private creeks
 - Hydrologic impacts avoidance
 - New creekside development requirements
 - Groundwater recharge – open spaces and urban areas
 - Preservation of beneficial uses
 - Stormwater treatment
 - Low impact development



Other Important Agencies/Plans

- Federal Safe Drinking Water Act
- Porter-Cologne Water Quality Control Act
- Federal Clean Water Act
- National Pollutant Discharge Elimination System
- State Water Resources Control Board
- San Francisco Bay Regional Water Control Board

Conservation, Open Space and Recreation

» Air Quality

- All San Mateo residents should have the ability to breath safe, clean air. (Goal COS-4)
 - Air quality thresholds
 - Health risk assessment
 - Activity near sensitive receptors
 - Odors
 - Toxic air contaminants
 - Air quality construction impacts
 - Truck idling
 - Clean air refuges

Other Important Agencies/Plans

- Bay Area Air Quality Management District
- Air District Community Air Risk Evaluation Program

Land Use and Air Quality

- » **California Air Resources Board (CARB) 2005 Air Quality and Land Use Handbook recommended avoiding siting new sensitive uses, including residential, with 500 feet of a freeway or high-volume roadway (> 100,000 trips per day)**
- » **Additional considerations:**
 - Fleet mix and fuel standards have decreased emissions since 2005
 - Infill residential close to services, schools, jobs, and transit offers important health, climate, economic, and other benefits
 - Eliminating urban infill sites and pushing new homes farther out increases commutes, emissions, and pollution exposure
- » **2016 BAAQMD Planning Healthy Places Guidebook includes strategies to reduce air pollution exposure and its health effects**
- » **Cities like San Francisco and Oakland have adopted Best Management Practices for projects near high-volume roadways in their health code or as a standard condition of approval**

CARB Strategies for Reducing Air Pollution



Strategies that reduce traffic emissions

1. Speed reduction mechanisms including roundabouts
2. Traffic signal management
3. Speed limit reductions on high-speed roadways (>55 mph)



Strategies that reduce the concentration of traffic pollution

4. Urban design that promotes air flow and reduces the concentration of pollution along street corridors
5. Solid barriers such as sound walls
6. Vegetation that reduces the concentration of pollution



Strategies that remove pollution from indoor air

7. Indoor high efficiency filtration that removes pollution from the air

Conservation, Open Space and Recreation

» Hillsides

- Minimize the impact of hillside development on the natural environment and public safety. (Goal COS-5)
 - Hillside development principles
 - Preservation of natural topography



Other Important Agencies/Plans

- San Mateo Municipal Code

Conservation, Open Space and Recreation

» Archaeological Resources and Tribal Cultural Resources

- Protect archaeological resources and resources that are culturally significant to Native American tribes and acknowledge San Mateo's past as indigenous land. (Goal COS-6)
 - Archaeological resource protection
 - Tribal cultural resources preservation
 - Tribal consultation
 - On-site mitigation
 - Pre-construction investigations

Other Important Agencies/Plans

- National Historic Preservation Act
- California Register of Historical Resources
- California Environmental Quality Act
- California Senate Bill 18
- California Assembly Bill 52
- San Mateo Municipal Code

Conservation, Open Space and Recreation

» Parks and Recreation

- Provide a comprehensive system of park and recreation programs and facilities based on the needs of the City's residents to encourage healthy lifestyles and ensure access for all. (Goal COS-7)
 - Active and healthy lifestyles
 - Community building
 - Enrichment and lifelong learning
 - Parks as learning environments
 - Child and youth development
 - Aging adults
 - Community-led activity initiatives
 - Conservation and nature awareness
 - Promoting Central Park



Other Important Agencies/Plans

- Recreation Facilities Strategic Plan

Conservation, Open Space and Recreation

» Parks and Recreation

- Provide equitable and convenient access to parks, recreational programs, and facilities so that all residents experience the benefits of parks and open space on their physical and mental health. (Goal COS-8)
 - Accessible facilities
 - Recreation fee assistance
 - Customer service
 - Inclusion and accessibility
 - Resident input
 - Public information
 - Technology innovation



Other Important Agencies/Plans

- Park Master Plans
- Recreation Facilities Strategic Plan

Conservation, Open Space and Recreation

» Parks and Recreation

- Provide the appropriate mix of parks and facilities that balances the needs of active and passive facilities, allows formal and informal uses, is accessible for all residents, and meets existing and future recreation needs. (Goal COS-9)
 - Facility standards
 - Acreage standards
 - Walkable parks and amenities
 - Active use facilities
 - Park master planning
 - Rehabilitation or purchase of school sites
 - Regional recreational facilities
 - Bay Meadows Community Park



Other Important Agencies/Plans

- Park Master Plans
- Recreation Facilities Strategic Plan

Conservation, Open Space and Recreation

» Parks and Recreation

- Plan and develop well-designed parks and recreation facilities compatible with surrounding uses that promote accessibility, efficient use, and practical maintenance. (Goal COS-10)
 - Parks and recreation facility rehabilitation priorities
 - Park preservation
 - Shared use
 - Cost-effective maintenance and upgrades
 - Sustainability practices
 - Maintenance standards
 - Environmentally-sound park operations
 - San Mateo City Parks and Recreation Foundation
 - Asset Management Plan update
 - Strategic community partnerships
 - Neighborhood-supported projects



Other Important Agencies/Plans

- Park Master Plans
- Recreation Facilities Strategic Plan

Conservation, Open Space and Recreation

» Parks and Recreation

- Provide stable and adequate operational and capital funding for the parks and recreation system. (Goal COS-11)
 - Program fees and cost recovery
 - Maintenance and operating costs
 - Parks and facilities in major projects
 - Development fees
 - Cooperative service delivery



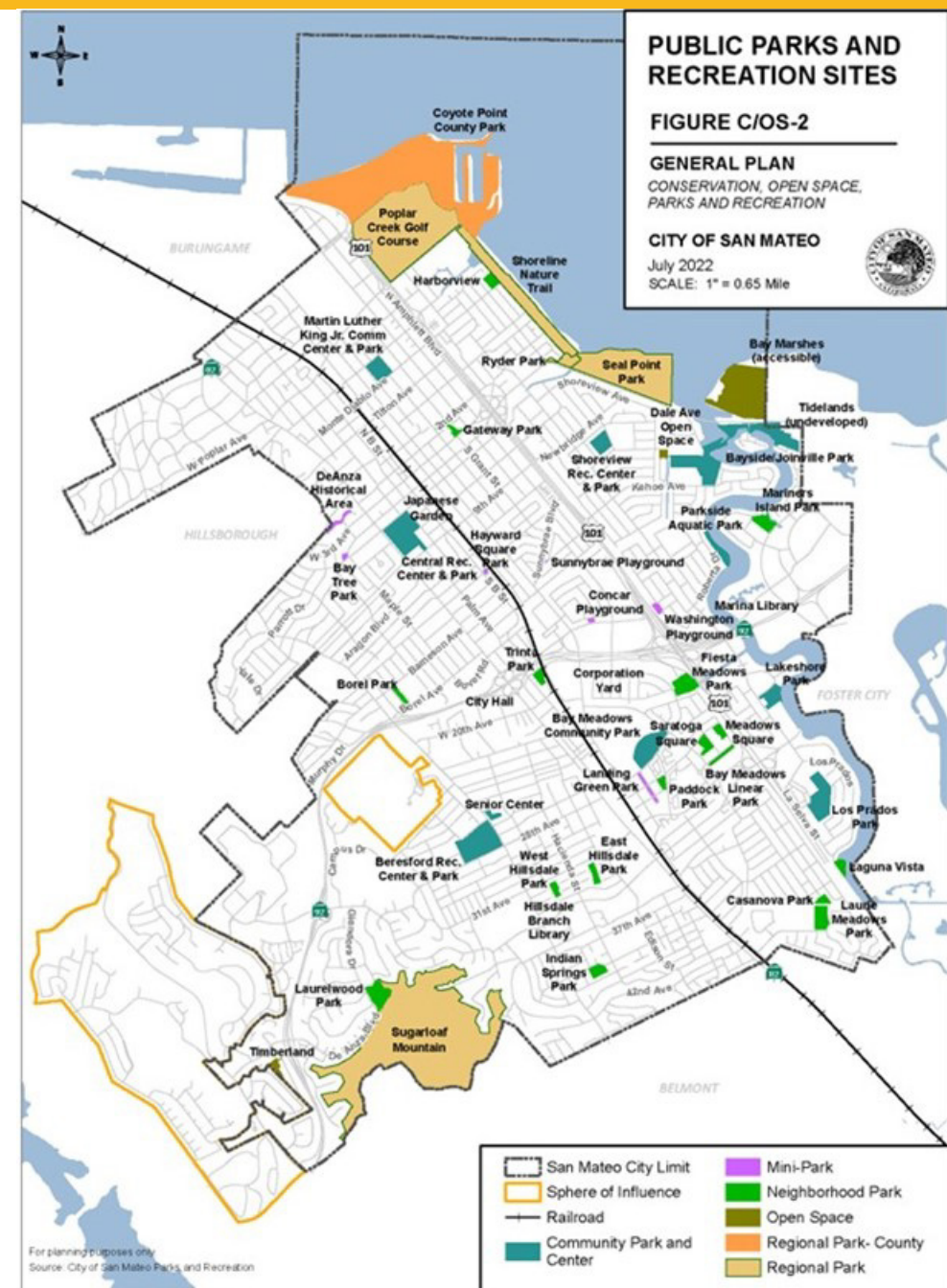
Other Important Agencies/Plans

- Park Master Plans
- Recreation Facilities Strategic Plan

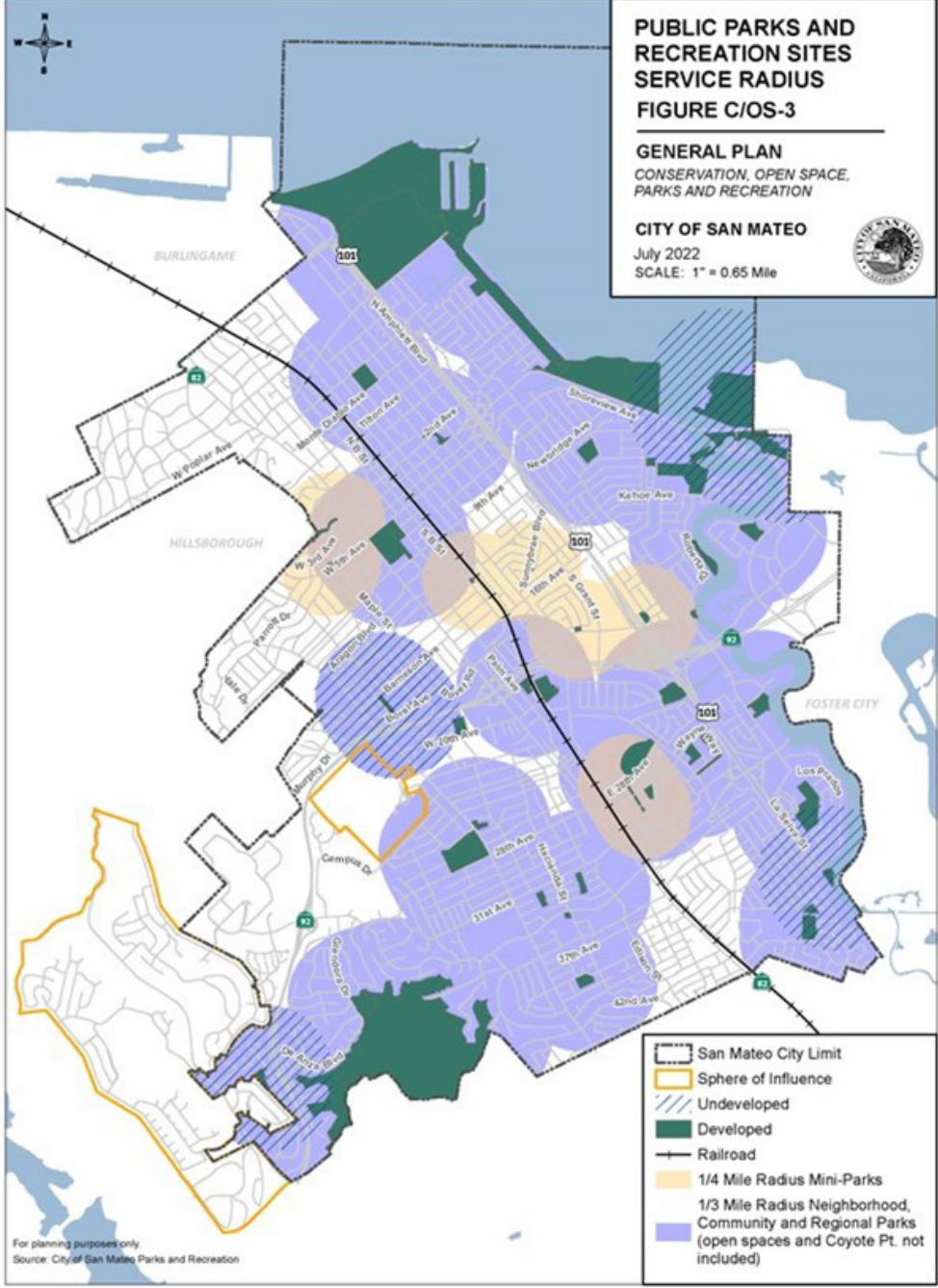
Waterways in San Mateo Map



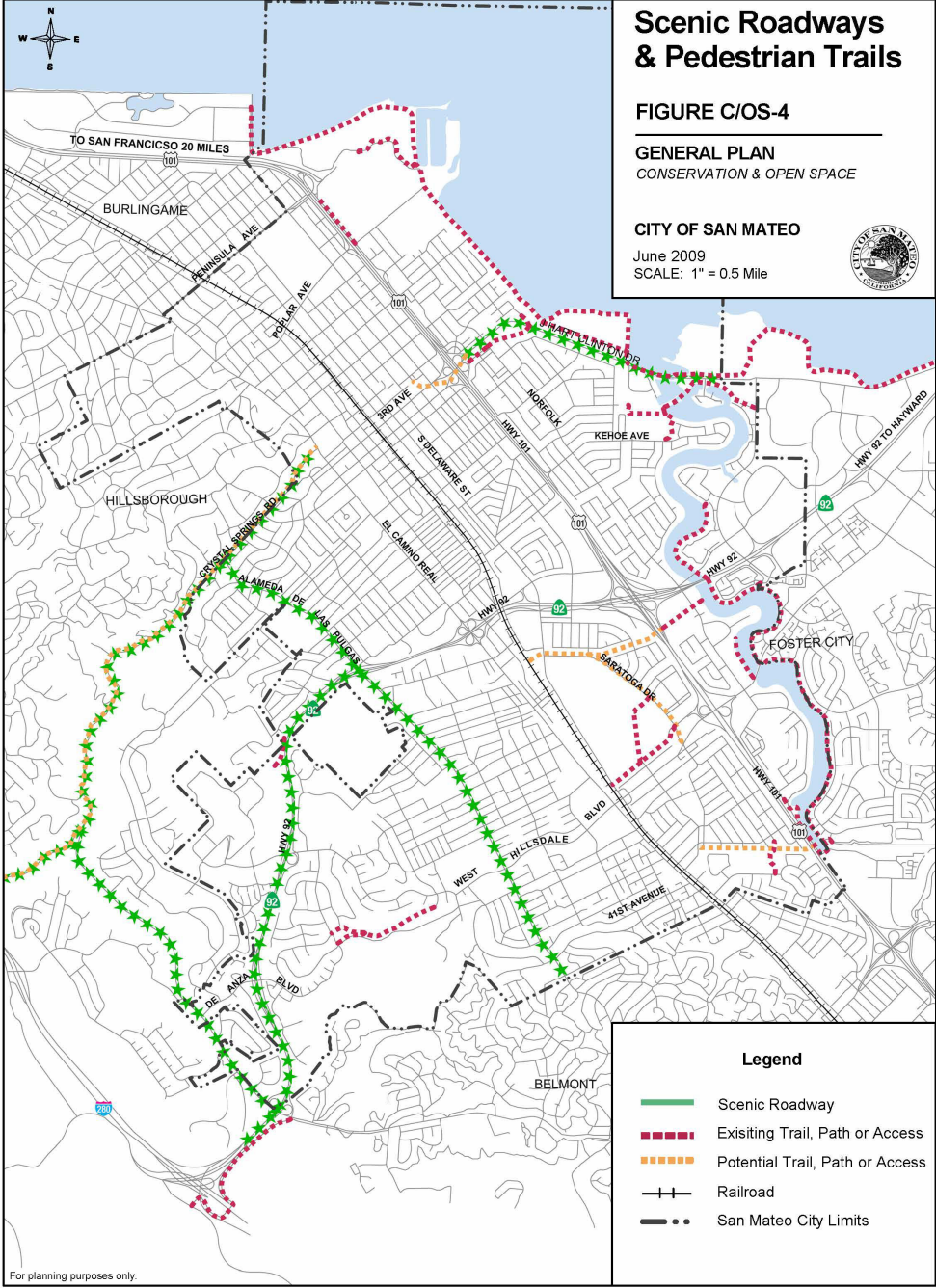
Public Parks and Recreation Sites Map



Public Parks and Recreation Sites Service Radius Map



Scenic Roadways and Pedestrian Trails in San Mateo Map



Public Services and Facilities

Public Services and Facilities

» Community Safety

- Protect the community's health, safety, and welfare by maintaining adequate police, fire, and life safety protection. (Goal PS-1)
 - Police and Fire Services
 - Police Station
 - Fire Stations
 - Fire Inspections
 - Maintenance and Replacement
 - Emergency Medical Service (EMS) Readiness
 - Equitable Code Enforcement



Other Important Agencies/Plans

- San Mateo County Department of Emergency Management
- San Mateo Consolidated Fire Department

Public Services and Facilities

» Water Supply

- Support maintaining access to a safe, sustainable and resilient supply of water for San Mateo. (Goal PS-2)
 - Supplemental Water Sources
 - Water Conservation
 - Water Efficiency
 - Recycled Water
 - Water Reduction Strategies

Other Important Agencies/Plans

- Cal Water Mid-Peninsula District
- Estero Municipal Improvement District (EMID)
- San Francisco Public Utilities Commission (SFPUC)
- California Green Building Standards Code

Public Services and Facilities

» Sewer and Storm Drainage

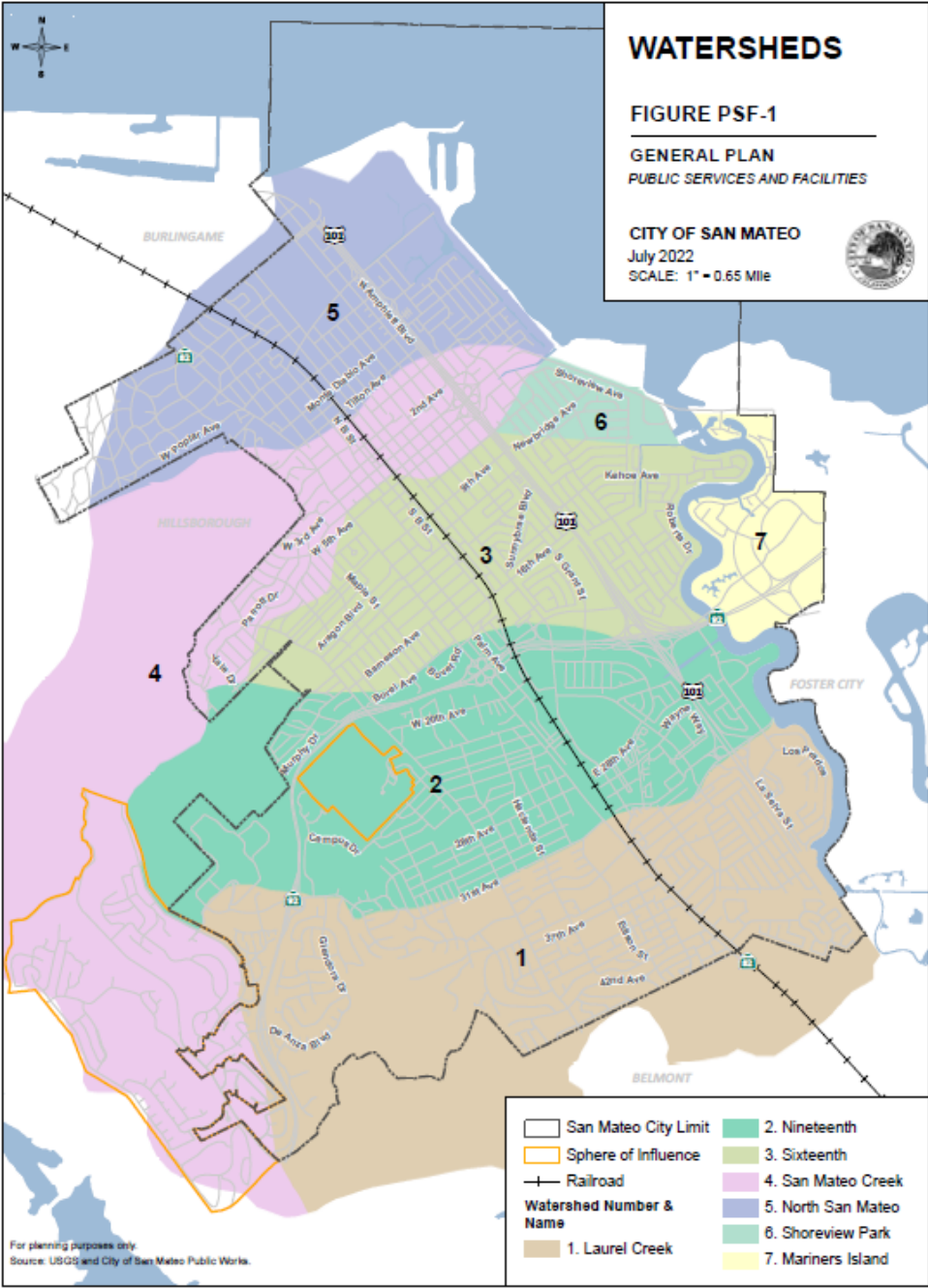
- Provide storm drainage, sewer and flood control facilities adequate to serve existing needs, projected population, and employment growth. (Goal PS-3)
 - Sewer System
 - Sewer Requirements for New Development
 - Sewer Overflow Reduction
 - Wastewater Treatment Plant
 - Inter-Agency Coordination for Wastewater Planning
 - Coordinate Infrastructure Improvements
 - Creek Alteration
 - Stormwater Drainage System
 - City Infrastructure Studies and Master Plans
 - Stormwater Pollution Prevention Education
 - Dig Once



Other Important Agencies/Plans

- City of San Mateo Sewer System Management Plan
- San Mateo Clean Water Program
- National Pollutant Discharge Elimination System permit

San Mateo Watersheds



Public Services and Facilities

» Public Services and Facilities

- Maintain and develop public facilities, and ensure they are equitably available to all current and future members of the community. (Goal PS-4)
 - Equitable Facilities
 - Joint Use
 - City Hall
 - Library Resources and Services
 - Library Service
 - Cultural and Entertainment Facilities
 - Incentives for Public Facilities
 - Corporation Yard
 - San Mateo County Events Center
 - Inclusive Outreach



Other Important Agencies/Plans

- Public Works Department
- San Mateo Public Library

Public Services and Facilities

» Children, Youth and Schools

- Foster the healthy development and education of children of all abilities, incomes, and backgrounds. (Goal PS-5)
 - School Assistance
 - School Site Reuse or Redevelopment
 - Child Care Needs
 - Provision of Child Care
 - Child Care Centers at Public and Quasi Public Facilities
 - Child Care Centers in Residential Neighborhoods
 - School District Coordination
 - Child Care and New Construction



Other Important Agencies/Plans

- San Mateo-Foster City School District
- San Mateo Union High School District
- Private Child Care Facilities

Public Services and Facilities

» Healthcare and Social Services

- Support access for all residents to health care facilities, social services, and other important community health amenities. (Goal PS-6)
 - San Mateo County Hospital
 - Mills Health Center
 - Social Services
 - Vulnerable Populations
 - Community Health Care Facilities

Other Important Agencies/Plans

- San Mateo County Hospital
- Mills Health Center
- San Mateo County Health

Public Services and Facilities

» Solid Waste

- Reduce the generation of solid waste and increase the diversion of waste from landfills. (Goal PS-7)
 - Solid Waste Disposal
 - Recycling
 - Composting
 - Waste Reduction
 - Waste Collection Safety

Other Important Agencies/Plans

- California Green Building Standards Code
- San Mateo Municipal Code Chapters 7.32 Garbage and 7.33 Recycling and Salvaging of Construction and Demolition Debris

Noise

Noise Resources

» Goals and Policies

- Protect “noise sensitive” land uses from excessive noise levels.
(Goal N-1)
 - Interior Noise Level Standard
 - Exterior Noise Level Standard
 - Inclusive Outreach

Other Important Agencies/Plans

- Chapter 7.30 Noise Regulations of the San Mateo Municipal Code

Noise Resources

» Goals and Policies

- Minimize unnecessary, annoying, or unhealthful noise. (Goal N-2)
 - Noise Regulation
 - Minimize Noise Impacts
 - Minimize Commercial Noise
 - Traffic Noise
 - Railroad Noise and Vibration
 - Construction Noise and Vibration



Other Important Agencies/Plans

- Federal Rail Administration
- Peninsula Corridor Joint Powers Board
- Chapter 7.30 Noise Regulations of the San Mateo Municipal Code

Circulation

Circulation Element

» Multimodal Transportation

- Design and implement a multimodal transportation system that is sustainable, safe, and accessible for all users and that connects the community utilizing all modes of transportation. (Goal C-1)
 - Sustainable Transportation
 - Complete Streets
 - Vision Zero Plan
 - Pedestrian and Bicycle Mobility
 - Transit-Oriented Development
 - Equitable Multimodal Network
 - Safe Routes for Seniors
 - Safety Education
 - Transportation Funding



Circulation Element

» Transportation Demand Management

- Use transportation demand management (TDM) to reduce the number and length of single-occupancy vehicle trips and encourage sustainable travel behaviors through policy, zoning strategies, and targeted context-appropriate programs and incentives. (Goal C-2)
 - TDM Requirements
 - TDM Education and Outreach
 - Partnership Opportunities
 - Travel to Schools
 - New Development Shuttle Services
 - Unbundled Parking

Other Important Agencies/Plans

- US Department of Transportation
- Caltrans
- Metropolitan Transportation Commission/Association of Bay Area Governments
- Caltrain
- SamTrans

Circulation Element

» Pedestrians

- Build and maintain a safe, connected and equitable pedestrian network that provides access to community destinations such as employment centers, transit, schools, shopping and recreation. (Goal C-3)
 - Pedestrian Network
 - Pedestrian Enhancements with New Development
 - Right-of-Way Improvements
 - Utility Undergrounding
 - Pedestrian Trails and Routes Awareness
 - Access for Users of All Ages and Abilities
 - Safe Routes to School
 - Downtown Pedestrian Mall



Other Important Agencies/Plans

- US Department of Transportation
- Caltrans
- Metropolitan Transportation Commission/Association of Bay Area Governments
- Pacific Gas & Electric

Circulation Element

» Bicycles and Micromobility

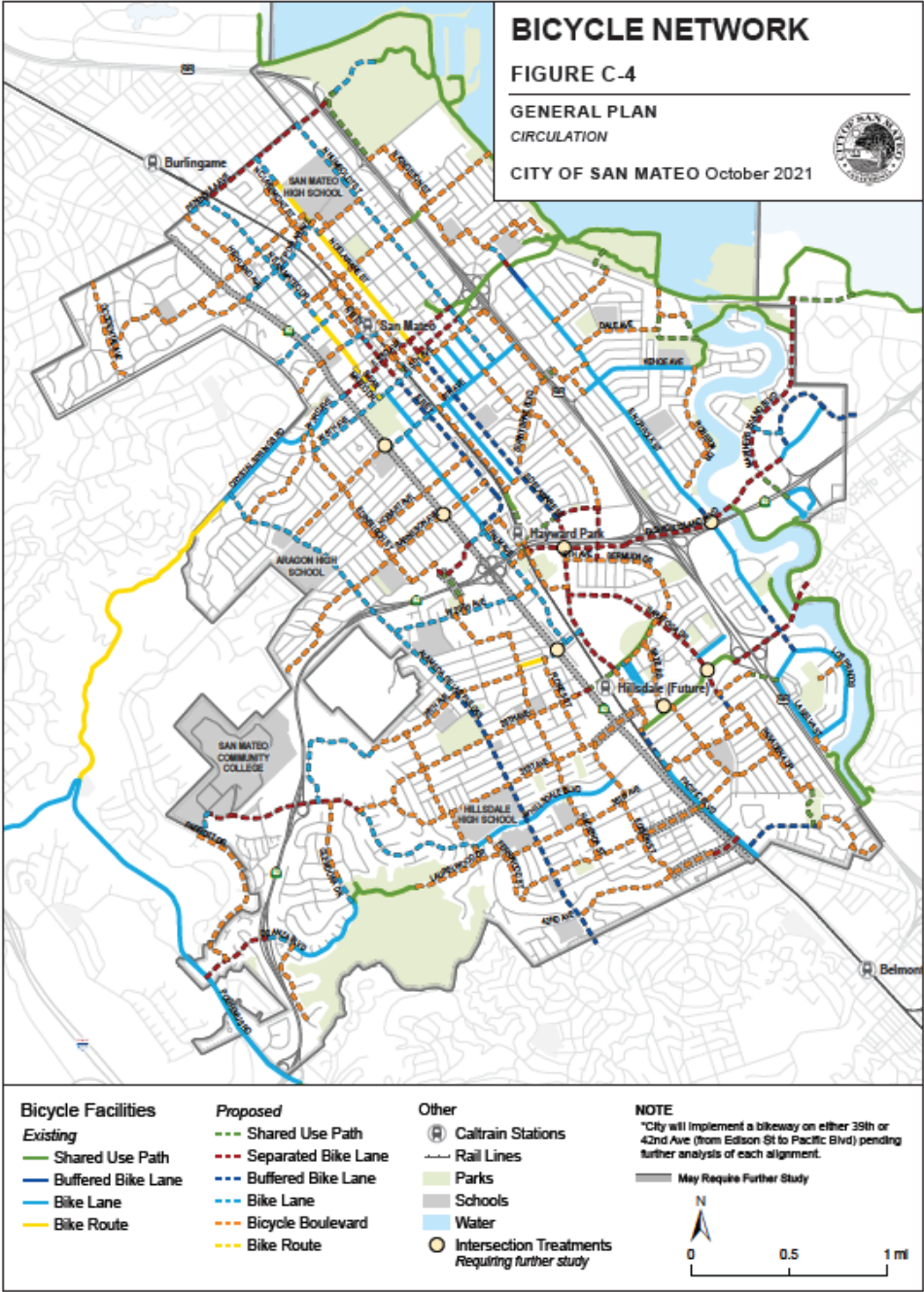
- Build and maintain a safe, connected, and equitable bicycle and micromobility network that provides access to community destinations such as employment centers, transit, schools, shopping, and recreation. (Goal C-4)
 - Bicycle Master Plan
 - First and Last Mile Connections
 - Connectivity Across Freeway Barriers
 - Bicycle Related Technology
 - Interjurisdiction Coordination
 - Paving Coordination



Other Important Agencies/Plans

- US Department of Transportation
- Caltrans
- Metropolitan Transportation Commission/Association of Bay Area Governments
- Caltrain
- SamTrans

Bicycle Network in San Mateo



Circulation Element

» Transit and Mobility Services

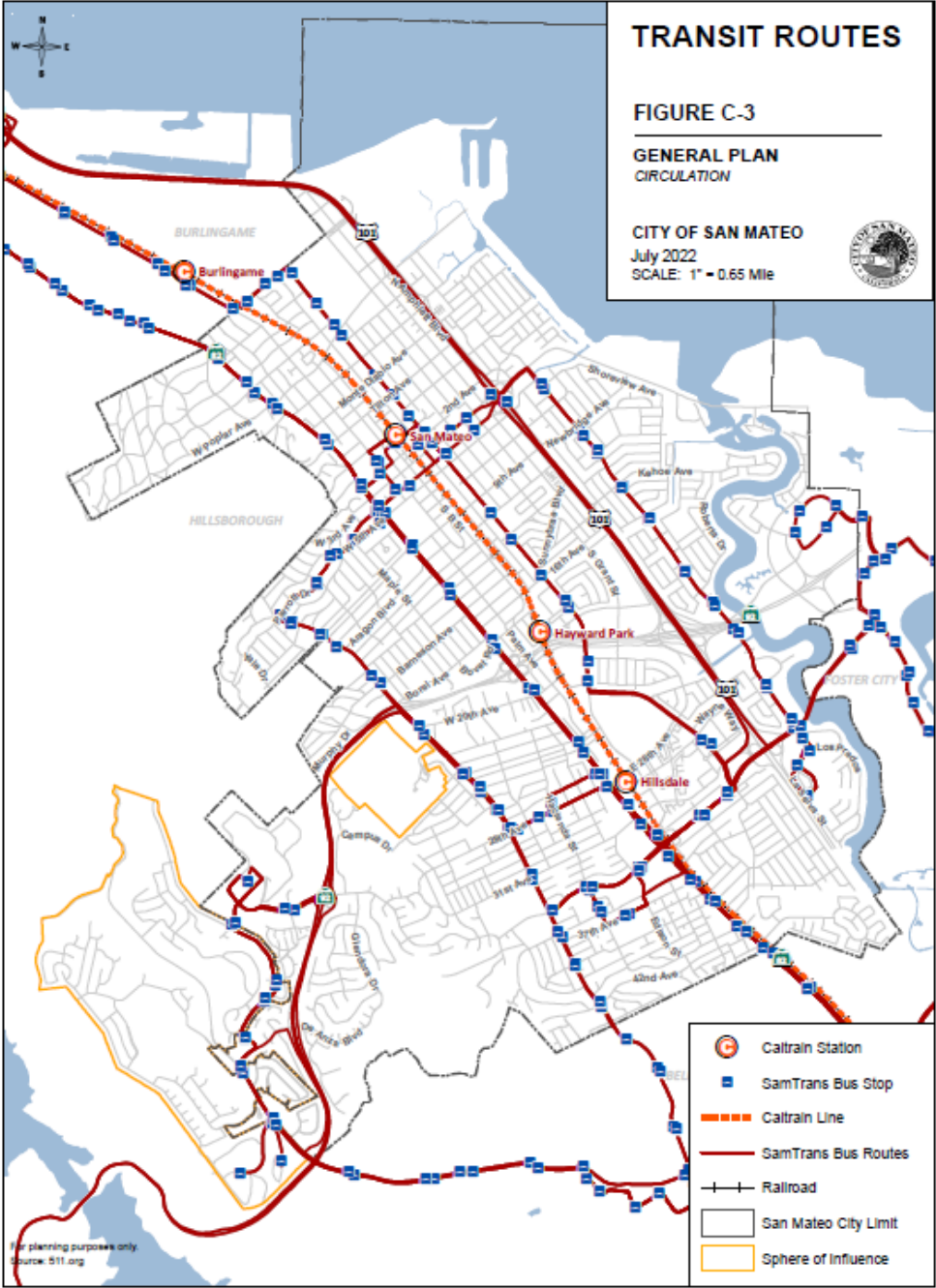
- Make transit a viable transportation option for the community by supporting frequent, reliable, cost-efficient, and connected service. (Goal C-5)
 - Transit Ridership
 - Caltrain
 - California High Speed Rail
 - Safety at At-Grade Rail Crossings
 - Transit Access in New Developments
 - Grade Separation
 - Shuttle Programs



Other Important Agencies/Plans

- US Department of Transportation
- Caltrans
- Metropolitan Transportation Commission/Association of Bay Area Governments
- Caltrain
- California High Speed Rail Authority
- SamTrans

Transit Routes in San Mateo



Circulation Element

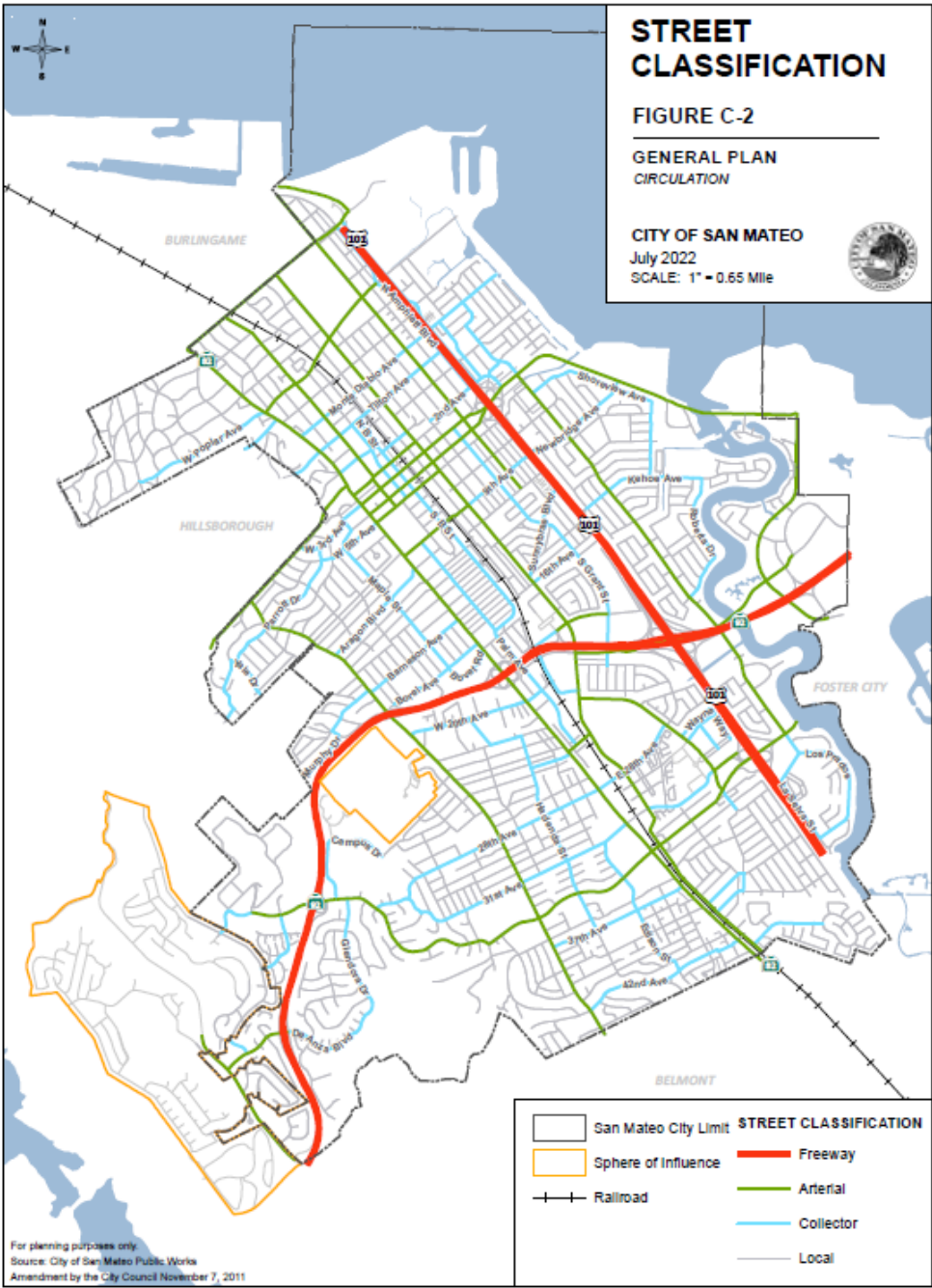
» Roadways Improvements

- Achieve a transportation system that accommodates future growth, reduces vehicle miles traveled (VMT) per capita, and maintains efficient operations for all modes. (Goal C-6)
 - Roadway Operations
 - Neighborhood Traffic
 - Truck Routes
 - Capital Improvement Program
 - Traffic Signal Installation
 - Emergency Signal Preemption
 - Multimodal Level of Service Standard
 - Prioritization and Timing of Roadway Improvements
 - Congestion Management

Other Important Agencies/Plans

- US Department of Transportation
- Caltrans
- Metropolitan Transportation Commission/Association of Bay Area Governments

San Mateo's Roadway Network



Circulation Element

» Parking Management

- Use parking, enforcement and curb management strategies to effectively administer parking supply and maximize utilization of public assets. (Goal C-7)
 - Parking Management
 - Shared Parking
 - Bicycle Parking
 - Curbside Management
 - Loading Areas in New Developments
 - Parking Maximums
 - Truck Loading



Other Important Agencies/Plans

- US Department of Transportation
- Caltrans
- Metropolitan Transportation Commission/Association of Bay Area Governments

Circulation Element

» Future Mobility and Technology

- Build a values-driven regulatory, management, and partnership framework that flexibly encourages emerging transportation technologies in service of City and community goals. (Goal C-8)
 - Emerging Technologies
 - Equitable Mobility Options
 - Mobility Data
 - Strategic Partnerships and Pilots
 - Future-Ready Infrastructure
 - Equitable Mobility Technology
 - Intelligent Transportation Systems



Other Important Agencies/Plans

- US Department of Transportation
- Caltrans
- Metropolitan Transportation Commission/Association of Bay Area Governments