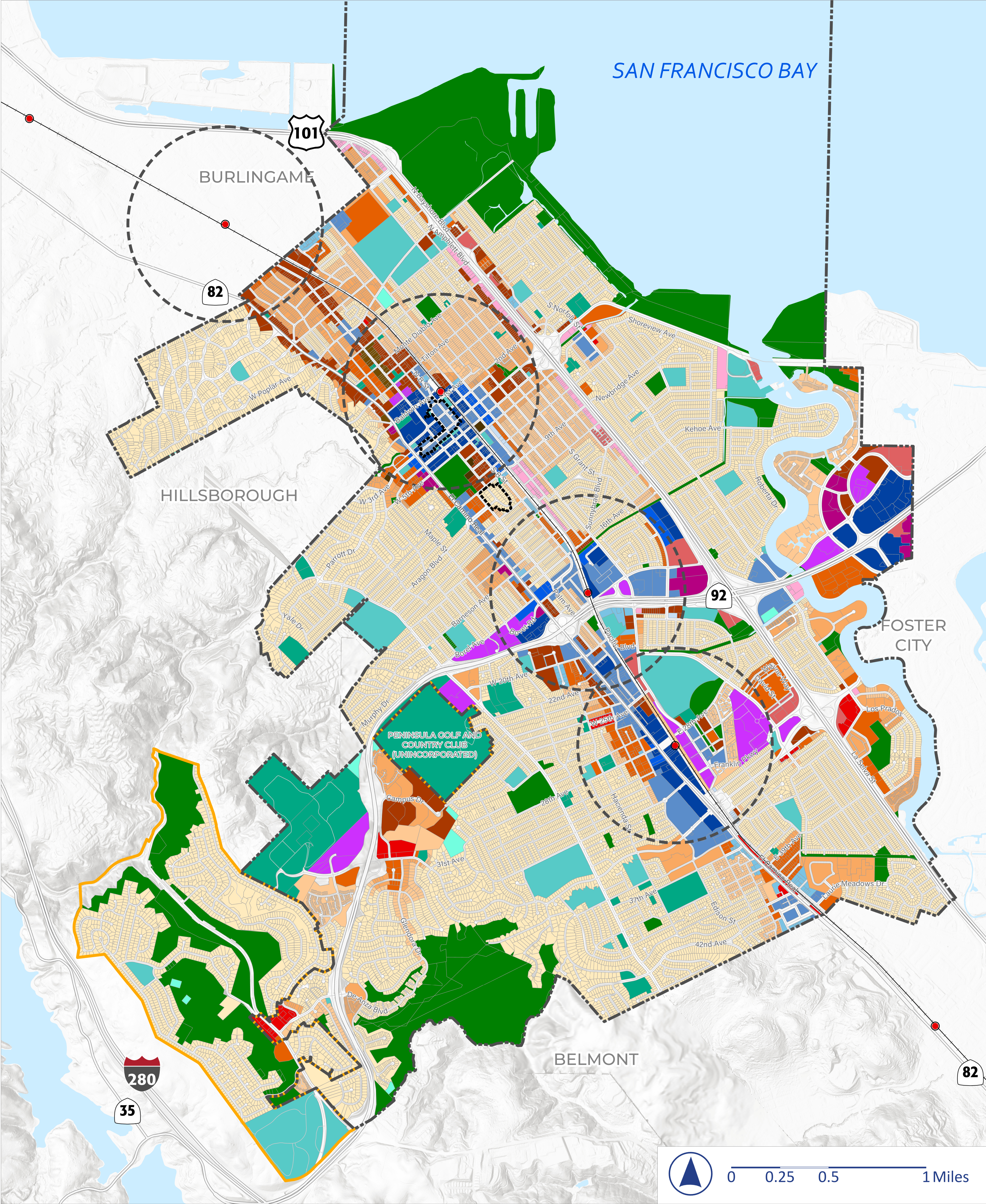


Draft General Plan 2040 Land Use Map



- | | | |
|---|---|---|
| City Limits | Residential Medium I (3-5 stories, 36-50 du/ac) | Mixed-Use Low (2-4 stories, 10-35 du/ac) |
| Sphere of Influence | Residential Medium II (4-6 stories, 51-99 du/ac) | Mixed-Use Medium I (3-5 stories, 36-50 du/ac) |
| 1/2 Mile Radius Around Caltrain | Residential High I (5-8 stories, 100-130 du/ac) | Mixed-Use Medium II (4-6 stories, 51-99 du/ac) |
| Caltrain Station | Residential High II (6-10 stories, 100-200 du/ac) | Mixed-Use High I (5-8 stories, 100-130 du/ac) |
| Caltrain | Service Commercial (1-3 stories) | Mixed-Use High II (6-10 stories, 100-200 du/ac) |
| Historic Districts | Regional Commercial (1-3 stories) | Parks/ Open Space |
| Residential Very Low (1-3 stories, 1-9 du/ac) | Neighborhood Commercial (1-3 stories) | Public Facilities |
| Residential Low I (1-3 stories, 9-19 du/ac) | Office Low (1-2 stories) | Quasi-Public (1-3 stories) |
| Residential Low II (2-4 stories, 20-35 du/ac) | Office Medium (2-4 stories) | Utilities |
| | Office High (3-5 stories) | |

Source: City of San Mateo, 2022; ESRI, 2022; PlaceWorks, 2023